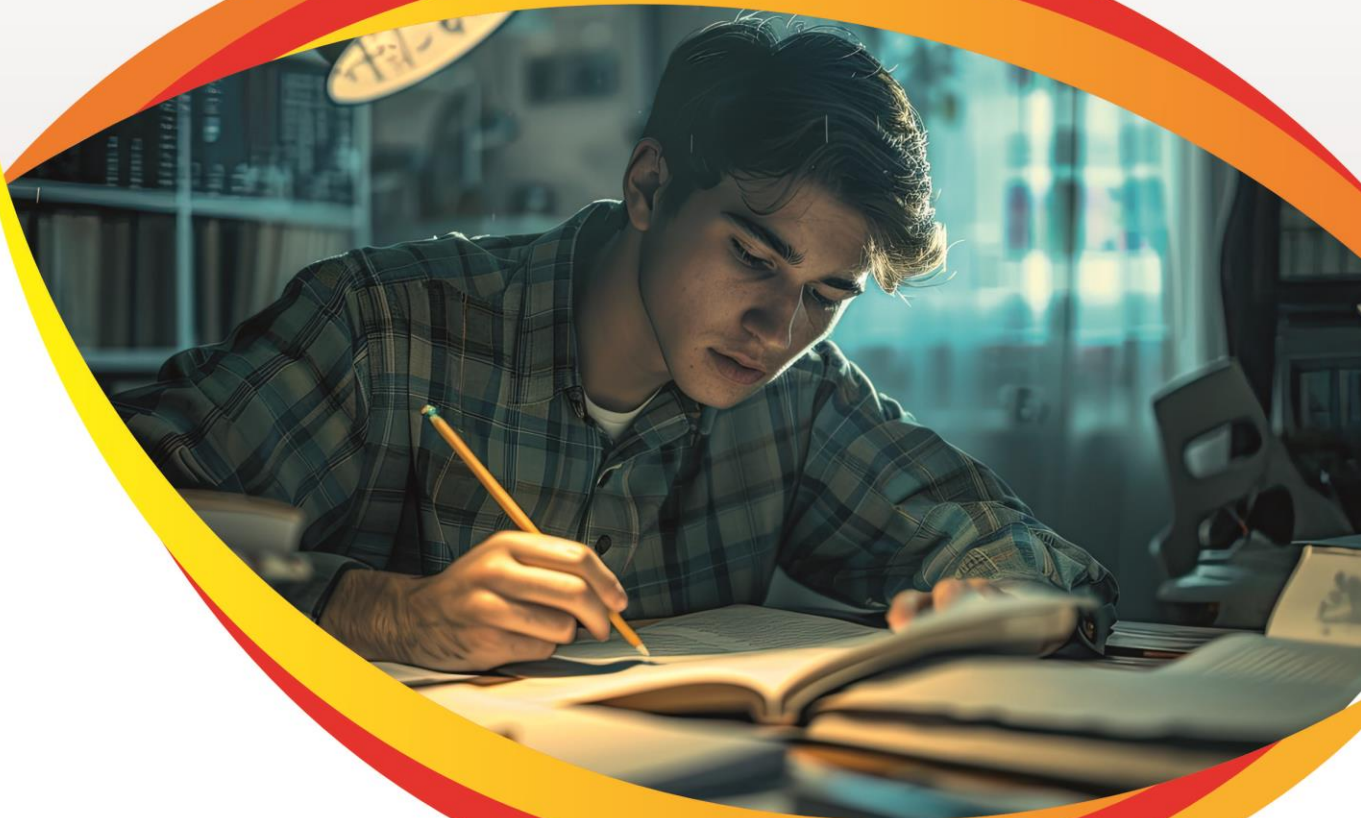


मोशन है, तो भरोसा है

**MOTION**  
18 YEARS OF LEGACY



**JEE ADVANCED 2025**

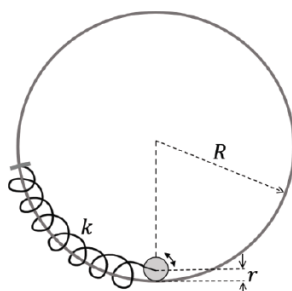
# **QUESTION PAPER WITH SOLUTIONS**

**PHYSICS [PAPER-1]**

**SECTION 1 (Maximum Marks: 12)**

- This section contains FOUR (04) questions.
- Each question has FOUR options (A), (B), (C) and (D). ONLY ONE of these four options is the correct answer.
- For each question, choose the option corresponding to the correct answer.
- Answer to each question will be evaluated according to the following marking scheme:  
Full Marks : +3 If ONLY the correct option is chosen;  
Zero Marks : 0 If none of the options is chosen (i.e. the question is unanswered);  
Negative Marks : -1 In all other cases.

1. The center of a disk of radius  $r$  and mass  $m$  is attached to a spring of spring constant  $k$ , inside a ring of radius  $R > r$  as shown in the figure. The other end of the spring is attached on the periphery of the ring. Both the ring and the disk are in the same vertical plane. The disk can only roll along the inside periphery of the ring, without slipping. The spring can only be stretched or compressed along the periphery of the ring, following the Hooke's law. In equilibrium, the disk is at the bottom of the ring. Assuming small displacement of the disc, the time period of oscillation of center of mass of the disk is written as  $T = \frac{2\pi}{\omega}$ . The correct expression for  $\omega$  is ( $g$  is the acceleration due to gravity):



(A)  $\sqrt{\frac{2}{3} \left( \frac{g}{R-r} + \frac{k}{m} \right)}$

(B)  $\sqrt{\frac{2g}{3(R-r)} + \frac{k}{m}}$

(C)  $\sqrt{\frac{1}{6} \left( \frac{g}{R-r} + \frac{k}{m} \right)}$

(D)  $\sqrt{\frac{1}{4} \left( \frac{g}{R-r} + \frac{k}{m} \right)}$

**Sol.**

**A**

$$r\ddot{\phi} = (R-r)\ddot{\theta}$$

$$r\ddot{\phi} = (R-r)\ddot{\theta}$$

$\phi$  = Rotation about its own axis

$\theta$  = Rotation about C

Equation of torque about COM

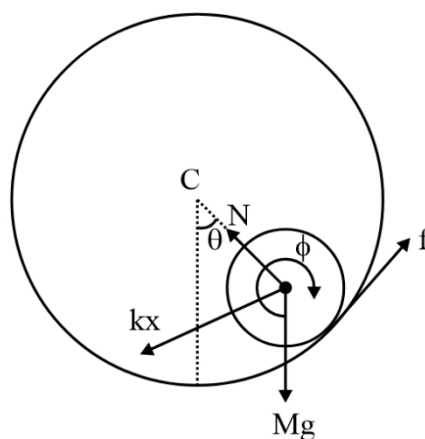
$$r k(R-r)\theta + mgr \sin \theta = -\frac{3}{2}mr^2\ddot{\alpha} = -\frac{3}{2}mr^2\ddot{\phi}$$

$$[k(R-r)r + mgr]\theta = -\frac{3}{2}mr^2\ddot{\phi} = -\frac{3}{2}mr(R-r)\ddot{\theta}$$

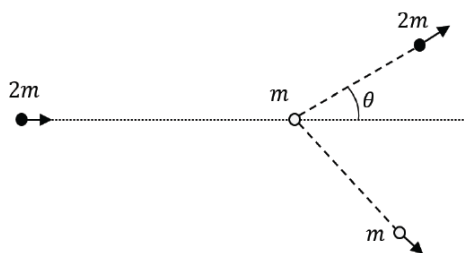
$$\Rightarrow \ddot{\theta} = -\frac{[k(R-r)r + mgr]}{\frac{3}{2}mr(R-r)}\theta$$

$$\Rightarrow \omega^2 = \frac{[k(R-r)r + mgr]}{\frac{3}{2}mr(R-r)} = \frac{k}{\frac{3}{2}m} + \frac{g}{\frac{3}{2}(R-r)}$$

$$\omega = \sqrt{\frac{2}{3} \left( \frac{k}{m} + \frac{g}{R-r} \right)}$$

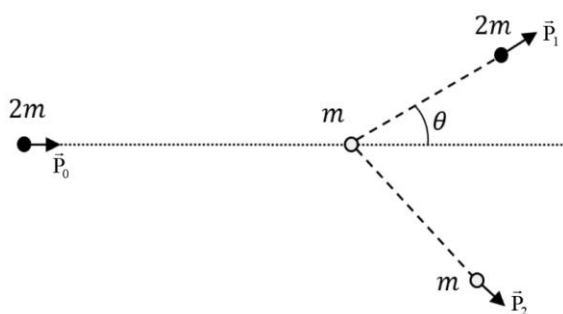


2. In a scattering experiment, a particle of mass  $2m$  collides with another particle of mass  $m$ , which is initially at rest. Assuming the collision to be perfectly elastic, the maximum angular deviation  $\theta$  of the heavier particle, as shown in the figure, in radians is:



- (A)  $\pi$                       (B)  $\tan^{-1}\left(\frac{1}{2}\right)$                       (C)  $\frac{\pi}{3}$                       (D)  $\frac{\pi}{6}$

Sol. **D**



Applying COLM  $\{F_{\text{ext}} = 0\}$

$$\vec{P}_0 = \vec{P}_1 + \vec{P}_2$$

$$\vec{P}_0 - \vec{P}_1 = \vec{P}_2$$

squaring both sides

$$P_0^2 + P_1^2 - 2P_0P_1 \cos \theta = P_2^2 \quad \dots(1)$$

collision is perfectly elastic. So we can conserve energy.

$$KE = \frac{P^2}{2 \times \text{mass}}$$

$$\frac{P_0^2}{4m} = \frac{P_1^2}{4m} + \frac{P_2^2}{2m} \Rightarrow P_0^2 = P_1^2 + 2P_2^2 \quad \dots(2)$$

$$P_0^2 + P_1^2 - 2P_0P_1 \cos \theta = \frac{P_0^2 - P_1^2}{2}$$

$$\Rightarrow P_0^2 + 3P_1^2 - 4P_0P_1 \cos \theta = 0$$

for  $P_1$  to be real

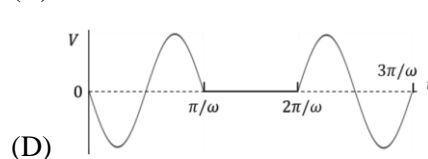
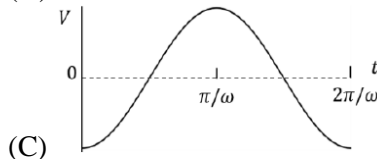
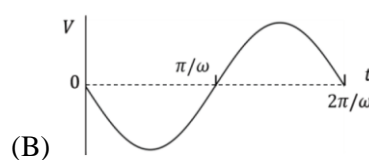
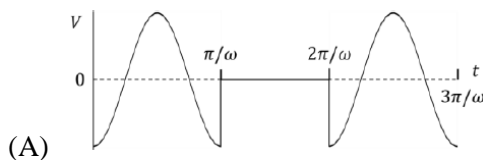
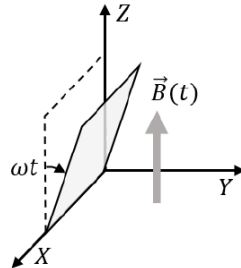
$$16P_0^2 \cos^2 \theta - 4 \times 3 \times P_0^2 \geq 0$$

$$4\cos^2 \theta \geq 3$$

$$\cos \theta \geq \frac{\sqrt{3}}{2}$$

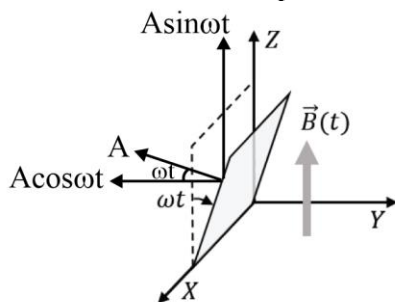
$$\text{So, } \theta \leq \frac{\pi}{6}$$

3. A conducting square loop initially lies in the XZ plane with its lower edge hinged along the X-axis. Only in the region  $y \geq 0$ , there is a time dependent magnetic field pointing along the Z-direction,  $\vec{B}(t) = B_0 (\cos \omega t) \hat{k}$ , where  $B_0$  is a constant. The magnetic field is zero everywhere else. At time  $t = 0$ , the loop starts rotating with constant angular speed  $\omega$  about the X axis in the clockwise direction as viewed from the +X axis (as shown in the figure). Ignoring self-inductance of the loop and gravity, which of the following plots correctly represents the induced e.m.f. (V) in the loop as a function of time:



**Sol.**

**A**  
Let A be area of the loop



$$\phi = \vec{B} \cdot \vec{A}$$

$$\phi = B_0 \cos \omega t A \sin \omega t$$

$$= B_0 \times 2 \times \frac{\cos \omega t A \sin \omega t}{2}$$

$$\phi = \frac{B_0 A}{2} \times \sin 2\omega t$$

$$e = -\frac{d\phi}{dt} = -\frac{B_0 A}{2} 2\omega \cos 2\omega t$$

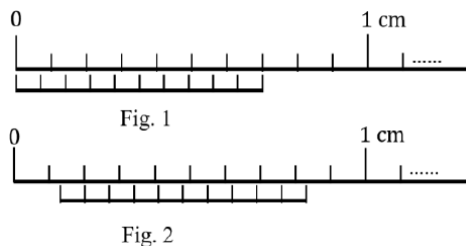
$$= -B_0 A \omega \cos 2\omega t$$

$$T = \frac{\pi}{\omega}$$

Loop will exit the field at  $t = \frac{\pi}{\omega}$  and re-enter the field at  $t = \frac{2\pi}{\omega}$ .

During this interval EMF in the loop will be zero.

4. Figure 1 shows the configuration of main scale and Vernier scale before measurement. Fig. 2 shows the configuration corresponding to the measurement of diameter D of a tube. The measured value of D is:



- (A) 0.12 cm      (B) 0.11 cm      (C) 0.13 cm      (D) 0.14 cm

**Sol. C**

From figure 1

$$10\text{VSD} = 7\text{MSD}$$

$$1\text{VSD} = 0.7\text{MSD}$$

$$\text{Least count} = 1\text{MSD} - 1\text{VSD}$$

$$= 0.3\text{MSD} = 0.03\text{cm}$$

So, reading from figure 2

$$\text{Diameter } D = 1\text{MSD} + 1\text{LC}$$

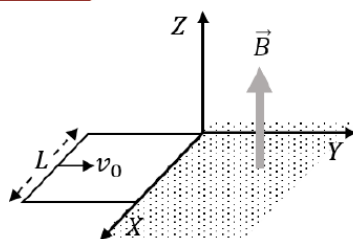
$$= 0.1 + 0.03 = 0.13\text{cm}$$

### SECTION 2 (Maximum Marks: 12)

- This section contains THREE (03) questions.
- Each question has FOUR options (A), (B), (C) and (D). ONE OR MORE THAN ONE of these four option(s) is(are) correct answer(s).
- For each question, choose the option(s) corresponding to (all) the correct answer(s).
- Answer to each question will be evaluated according to the following marking scheme:  
 Full Marks : +4 ONLY if (all) the correct option(s) is(are) chosen;  
 Partial Marks : +3 If all the four options are correct but ONLY three options are chosen;  
 Partial Marks : +2 If three or more options are correct but ONLY two options are chosen, both of which are correct;  
 Partial Marks : +1 If two or more options are correct but ONLY one option is chosen and it is a correct option;  
 Zero Marks : 0 If none of the options is chosen (i.e. the question is unanswered);  
 Negative Marks : -2 In all other cases.
- For example, in a question, if (A), (B) and (D) are the ONLY three options corresponding to correct answers, then  
 choosing ONLY (A), (B) and (D) will get +4 marks;  
 choosing ONLY (A) and (B) will get +2 marks;  
 choosing ONLY (A) and (D) will get +2 marks;  
 choosing ONLY (B) and (D) will get +2 marks;  
 choosing ONLY (A) will get +1 mark;  
 choosing ONLY (B) will get +1 mark;  
 choosing ONLY (D) will get +1 mark;  
 choosing no option (i.e. the question is unanswered) will get 0 marks; and  
 choosing any other combination of options will get -2 marks.

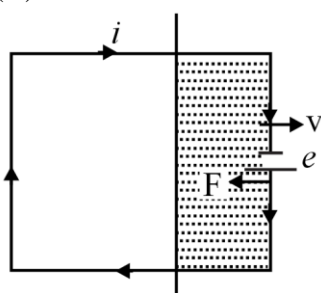
5. A conducting square loop of side L, mass M and resistance R is moving in the XY plane with its edges parallel to the X and Y axes. The region  $y \geq 0$  has a uniform magnetic field,  $\vec{B} = B_0 \hat{k}$ . The magnetic field is zero everywhere else. At time  $t = 0$ , the loop starts to enter the magnetic field with an initial velocity  $v_0 \hat{j}$  m/s, as shown in the figure. Considering the quantity  $K = \frac{B_0^2 L^2}{RM}$  in appropriate units, ignoring self-inductance of the loop and gravity, which of the following statements is/are correct:





- (A) If  $v_0 = 1.5KL$ , the loop will stop before it enters completely inside the region of magnetic field.  
 (B) When the complete loop is inside the region of magnetic field, the net force acting on the loop is zero.  
 (C) If  $v_0 = \frac{KL}{10}$ , the loop come to rest at  $t = \left(\frac{1}{K}\right) \ln\left(\frac{5}{2}\right)$ .  
 (D) If  $v_0 = 3KL$ , the complete loop enters inside the region of magnetic field at time  $t = \left(\frac{1}{K}\right) \ln\left(\frac{3}{2}\right)$ .

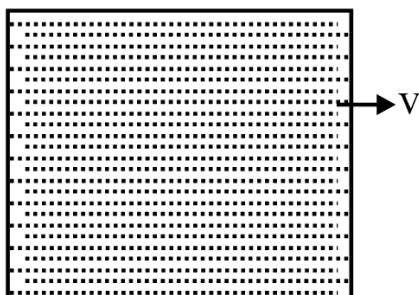
**Sol. B,D**  
(A)



$$\begin{aligned}
 F &= iLB_0 \\
 Ma &= -iLB_0 \\
 Mv \frac{dv}{dx} &= -iLB_0 \\
 &= -\frac{B_0 v L}{R} L B_0 \\
 Mv \frac{dv}{dx} &= -\frac{B_0^2 L^2 v}{R} \\
 \int_{v_0}^v dv &= -\int_0^x \frac{B_0^2 L^2}{MR} dx \\
 v - v_0 &= -kx \\
 v &= v_0 - kx \\
 \text{for } v &= 0 \\
 v_0 &= kx \\
 x &= \frac{v_0}{k} = \frac{1.5kL}{k} = 1.5L
 \end{aligned}$$

Option A is incorrect

(B) When loop is completely inside field –



There will no net change in flux due to which there will no any current in the loop.

So, net force on loop will be zero.

Option B is correct.

$$(C) \quad M \frac{dv}{dt} = - \frac{B_0^2 L^2 v}{R}$$

$$\int_{v_0}^v \frac{dv}{v} = - \int_0^t \frac{B_0^2 L^2}{MR} dt$$

$$\ln \frac{v}{v_0} = -kt$$

$$\frac{v}{v_0} = e^{-kt}$$

$$v = v_0 e^{-kt}$$

At  $t \rightarrow \infty$ ,  $v = 0$

Option C is incorrect.

$$(D) \quad v = v_0 - kx$$

$$\frac{dx}{dt} = v_0 - kx$$

$$\int_0^x \frac{dx}{v_0 - kx} = \int_0^t dt$$

$$-\frac{1}{k} \left[ \ln(v_0 - kx) \right]_0^x = t$$

$$\ln \frac{v_0 - kx}{v_0} = -kt$$

for  $x = L$  &  $v_0 = 3kL$

$$\ln \frac{(3kL - kL)}{3kL} = -kt$$

$$\ln \frac{2kL}{3kL} = -kt$$

$$\ln \frac{3}{2} = kt$$

$$\frac{1}{k} \ln \frac{3}{2} = t$$

Option D is correct.

6. Length, breadth and thickness of a strip having a uniform cross section are measured to be 10.5 cm, 0.05 mm, and 6.0  $\mu\text{m}$ , respectively. Which of the following option(s) give(s) the volume of the strip in  $\text{cm}^3$  with correct significant figures:

(1A)  $3.2 \times 10^{-5}$       (B)  $32.0 \times 10^{-6}$       (C)  $3.0 \times 10^{-5}$       (D)  $3 \times 10^{-5}$

Sol. **D**

$$l = 10.5 \text{ cm (3 s.f.)}$$

$$b = 0.05 \text{ mm (1 s.f.)}$$

$$t = 6.0 \mu\text{m (2 s.f.)}$$

$$v = l.b.t.$$

$$= 3.15 \times 10^{-2} \times 10^{-3} \times 10^{-6}$$

$$\Rightarrow 31.5 \times 10^{-12} \text{ m}^3$$

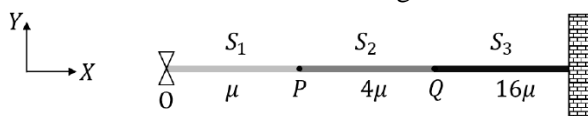
$$= 31.5 \times 10^{-6} \text{ cm}^3$$

$$= 32 \times 10^{-6} \text{ cm}^3 = 3 \times 10^{-5}$$

$\Rightarrow$  will be a value with only 1 significant digit

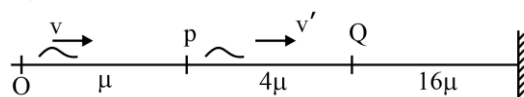
as 'b' have 1 significant digit i.e. least in number

7. Consider a system of three connected strings,  $S_1$ ,  $S_2$  and  $S_3$  with uniform linear mass densities  $\mu \text{ kg/m}$ ,  $4\mu \text{ kg/m}$  and  $16\mu \text{ kg/m}$ , respectively, as shown in the figure.  $S_1$  and  $S_2$  are connected at the point P, whereas  $S_2$  and  $S_3$  are connected at the point Q, and the other end of  $S_3$  is connected to a wall. A wave generator O is connected to the free end of  $S_1$ . The wave from the generator is represented by  $y = y_0 \cos(\omega t - kx) \text{ cm}$ , where  $y_0$ ,  $\omega$  and  $k$  are constants of appropriate dimensions. Which of the following statements is/are correct:



- (A) When the wave reflects from P for the first time, the reflected wave is represented by  $y = \alpha_1 y_0 \cos(\omega t + kx + \pi) \text{ cm}$ , where  $\alpha_1$  is a positive constant.
- (B) When the wave transmits through P for the first time, the transmitted wave is represented by  $y = \alpha_2 y_0 \cos(\omega t - kx) \text{ cm}$ , where  $\alpha_2$  is a positive constant.
- (C) When the wave reflects from Q for the first time, the reflected wave is represented by  $y = \alpha_3 y_0 \cos(\omega t - kx + \pi) \text{ cm}$ , where  $\alpha_3$  is a positive constant.
- (D) When the wave transmits through Q for the first time, the transmitted wave is represented by  $y = \alpha_4 y_0 \cos(\omega t - 4kx) \text{ cm}$ , where  $\alpha_4$  is a positive constant.

Sol. **A,D**



- (A) when wave reflects at P it goes into inversion, therefore reflected ray

$$\Rightarrow y = y_r \cos(\omega t + kx + \pi)$$

- (B) when wave transmits through P, then due to change in medium value of wave number changes to  $k' = \frac{\omega}{v'}$

$$\text{if } v = \sqrt{\frac{T}{\mu}}, \text{ then } v' = \sqrt{\frac{T}{4\mu}} = \frac{v}{2}, k' = 2k$$

$$\text{transmitted wave } y = y_t \cos(\omega t - 2kx)$$

- (C) reflected wave from point Q will be

$$y = y_r \cos[\omega t + 2kx + \pi]$$

- (D) Transmitted wave through Q,  $y = y_t \cos(\omega t - 4kx)$

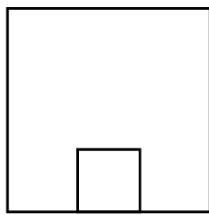


## SECTION 3 (Maximum Marks: 24)

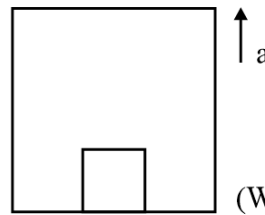
- This section contains SIX (06) questions.
- The answer to each question is a NUMERICAL VALUE.
- For each question, enter the correct numerical value of the answer using the mouse and the onscreen virtual numeric keypad in the place designated to enter the answer.
- If the numerical value has more than two decimal places, truncate/round-off the value to TWO decimal places.
- Answer to each question will be evaluated according to the following marking scheme:  
Full Marks : +4 If ONLY the correct numerical value is entered in the designated place;  
Zero Marks : 0 In all other cases.

8. A person sitting inside an elevator performs a weighing experiment with an object of mass 50 kg. Suppose that the variation of the height  $y$  (in m) of the elevator, from the ground, with time  $t$  (in s) is given by  $y = 8 \left[ 1 + \sin \left( \frac{2\pi t}{T} \right) \right]$ , where  $T = 40\pi$  s. Taking acceleration due to gravity,  $g = 10 \text{ m/s}^2$ , the maximum variation of the object's weight (in N) as observed in the experiment is \_\_\_\_\_

Sol. 2



$$(W)_{\min} = mg - ma_{\max}$$



$$(W)_{\max} = mg + ma_{\max}$$

elevator is performing SHM,  $y = 8 + 8 \cdot \sin \left( \frac{2\pi}{40\pi} \cdot t \right) = 8 + 8 \cdot \sin \left( \frac{1}{20} \cdot t \right)$

in SHM ( $a_{\max} = \omega^2 A$ )

$$\frac{d^2 y}{dt^2} = a_{\max} = \left( \frac{1}{20} \right)^2 \cdot 8 \text{ m/s}^2 = \frac{8}{400} = \frac{1}{50}$$

variation in weight  $\Rightarrow (W)_{\max} - (W)_{\min} = 2m \cdot a_{\max}$

$$= 2 \times 50 \times \frac{1}{50} = 2$$

9. A cube of unit volume contains  $35 \times 10^7$  photons of frequency  $10^{15}$  Hz. If the energy of all the photons is viewed as the average energy being contained in the electromagnetic waves within the same volume, then the amplitude of the magnetic field is  $\alpha \times 10^{-9}$  T. Taking permeability of free space  $\mu_0 = 4\pi \times 10^{-7} \text{ Tm/A}$ , Planck's constant  $h = 6 \times 10^{-34} \text{ Js}$  and  $\pi = \frac{22}{7}$ , the value of  $\alpha$  is \_\_\_\_\_

Sol. 22.97

Total energy of photons =  $N \cdot h\nu$

$$= 35 \times 10^7 \times 6 \times 10^{-34} \times 10^{15}$$

$$= 210 \times 10^{-12} \text{ J}$$

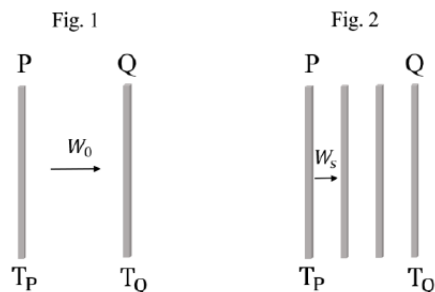
average energy in electromagnetic wave =  $\frac{B_0^2}{2\mu_0}$

$$210 \times 10^{-12} = \frac{B_0^2}{2 \times 4\pi \times 10^{-7}}$$

$$B_0^2 = 2 \times 210 \times 10^{-19} \times 4 \times \frac{22}{7}$$

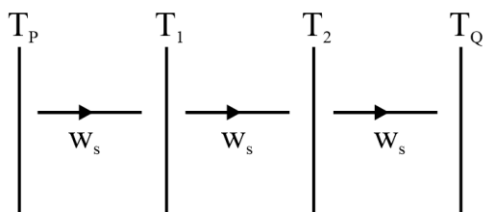
$$= 22.97 \times 10^{-9}$$

10. Two identical plates P and Q, radiating as perfect black bodies, are kept in vacuum at constant absolute temperatures  $T_P$  and  $T_Q$ , respectively, with  $T_Q < T_P$ , as shown in Fig. 1. The radiated power transferred per unit area from P to Q is  $W_0$ . Subsequently, two more plates, identical to P and Q, are introduced between P and Q, as shown in Fig. 2. Assume that heat transfer takes place only between adjacent plates. If the power transferred per unit area in the direction from P to Q (Fig. 2) in the steady state is  $W_s$ , then the ratio  $\frac{W_0}{W_s}$  is \_\_\_\_\_



Sol. 3

At steady state



$$w_s = \sigma e A T_P^4 - \sigma e A T_1^4 \quad \dots(1)$$

$$w_s = \sigma e A T_1^4 - \sigma e A T_2^4 \quad \dots(2)$$

$$w_s = \sigma e A T_2^4 - \sigma e A T_Q^4 \quad \dots(3)$$

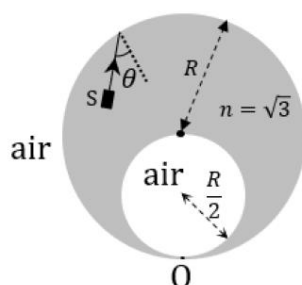
Adding three equations :- we get

$$3w_s = \sigma e A [T_P^4 - T_Q^4]$$

$$3w_s = w_0$$

$$\frac{w_0}{w_s} = 3$$

11. A solid glass sphere of refractive index  $n = \sqrt{3}$  and radius  $R$  contains a spherical air cavity of radius  $\frac{R}{2}$ , as shown in the figure. A very thin glass layer is present at the point O so that the air cavity (refractive index  $n = 1$ ) remains inside the glass sphere. An unpolarized, unidirectional and monochromatic light source S emits a light ray from a point inside the glass sphere towards the periphery of the glass sphere. If the light is reflected from the point O and is fully polarized, then the angle of incidence at the inner surface of the glass sphere is  $\theta$ . The value of  $\sin \theta$  is \_\_\_\_\_



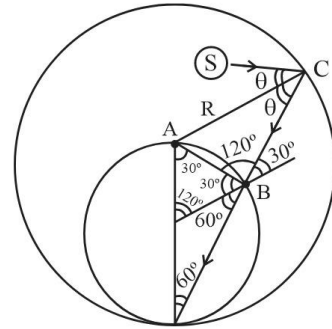
**Sol. 0.75**

$$AB = \frac{R\sqrt{3}}{2}$$

Now sine rule in  $\triangle ABC$

$$\frac{\sin \theta}{R\sqrt{3}/2} = \frac{\sin 120^\circ}{R}$$

$$\sin \theta = \frac{3}{4} = 0.75$$



- 12.** A single slit diffraction experiment is performed to determine the slit width using the equation,  $\frac{bd}{D} = m\lambda$ , where  $b$  is the slit width,  $D$  the shortest distance between the slit and the screen,  $d$  the distance between the  $m^{\text{th}}$  diffraction maximum and the central maximum, and  $\lambda$  is the wavelength.  $D$  and  $d$  are measured with scales of least count of 1 cm and 1 mm, respectively. The values of  $\lambda$  and  $m$  are known precisely to be 600 nm and 3, respectively. The absolute error (in  $\mu\text{m}$ ) in the value of  $b$  estimated using the diffraction maximum that occurs for  $m = 3$  with  $d = 5$  mm and  $D = 1$  m is \_\_\_\_\_

**Sol. 75.6**

$$\frac{bd}{D} = m\lambda$$

$$b = \frac{m\lambda D}{d}$$

given  $\lambda = 600 \text{ nm} = 600 \times 10^{-9} \text{ m}$

$$m = 3$$

$$d = 5 \times 10^{-3} \text{ m}$$

$$D = 1 \text{ m}$$

least count  $\Delta d = 1 \text{ mm} = 1 \times 10^{-3} \text{ m}$

$$\Delta D = 1 \text{ cm} = 1 \times 10^{-2} \text{ m}$$

absolute error in  $b$

$$b = \frac{m\lambda D}{d}$$

$$\frac{\Delta b}{b} = \frac{\Delta D}{D} + \frac{\Delta d}{d}$$

$$\Delta d = 1 \times 10^{-3}, d = 5 \times 10^{-3}$$

$$\text{so } \frac{\Delta d}{d} = \frac{1}{5} = 0.2$$

$$\text{and } \frac{\Delta D}{D} = \frac{1 \times 10^{-2}}{1} = 0.01$$

$$\text{so } \frac{\Delta b}{b} = 0.01 + 0.2$$

$$= 0.21$$

$$\text{Now } b = \frac{m\lambda D}{d} = \frac{3 \times 600 \times 10^{-9} \times 1}{5 \times 10^{-3}} = 3.6 \times 10^{-4} \text{ m}$$

$$b = 3.6 \times 10^{-4} \text{ m} = 360 \mu\text{m}$$

$$\text{Now ans will be } 360 \times 10^{-9} \times 0.21 = 75.6 \mu\text{m}$$

13. Consider an electron in the  $n = 3$  orbit of a hydrogen-like atom with atomic number  $Z$ . At absolute temperature  $T$ , a neutron having thermal energy  $k_B T$  has the same de Broglie wavelength as that of this electron. If this temperature is given by  $T = \frac{z^2 h^2}{\alpha \pi^2 a_0^2 m_N k_B}$ , (where  $h$  is the Planck's constant,  $k_B$  is the Boltzmann constant,  $m_N$  is the mass of the neutron and  $a_0$  is the first Bohr radius of hydrogen atom) then the value of  $\alpha$  is \_\_\_\_\_

**Sol. 72**

Electron in  $n = 3$  orbit of hydrogen like atom with atomic no. =  $z$

$$T = \frac{z^2 h^2}{\alpha \pi^2 a_0^2 m_N k_B}$$

De Broglie wave length if electron in Bohr orbit  
momentum

$$P_e = \frac{nh}{2\pi r_n}, P_e = \frac{nh}{2\pi \frac{n^2 a_0}{z}} = \frac{zh}{2\pi n a_0}$$

$$\text{then } \lambda_e = \frac{h}{P_e} = \frac{h}{\frac{zh}{2\pi n a_0}} = \frac{2\pi n a_0}{z}$$

for neutron

$$E = \frac{P^2}{2m_N} = K_B T \Rightarrow P_n = \sqrt{2m_N K_B T}$$

$$\text{wavelength } \lambda = \frac{h}{P_n} = \frac{h}{\sqrt{2m_N K_B T}}$$

equating wave length

$$\lambda_n = \lambda_e$$

$$\frac{h}{\sqrt{2m_N K_B T}} = \frac{2\pi n a_0}{z} \rightarrow \text{Find } T$$

$$\sqrt{2m_N K_B T} = \frac{h^2 z^2}{2\pi n a_0}$$

$$2m_N K_B T = \frac{h^2 z^2}{4\pi^2 n^2 a_0^2}$$

$$T = \frac{h^2 z^2}{8\pi^2 n^2 a_0^2 m_N K_B} \quad \text{Given } T = \frac{h^2 z^2}{\alpha \pi^2 a_0^2 m_N K_B}$$

$$\text{so } \alpha = 8n^2$$

$$\text{give } n = 3$$

$$\alpha = 72$$

## SECTION 4 (Maximum Marks: 12)

- This section contains THREE (03) Matching List Sets.
- Each set has ONE Multiple Choice Question.
- Each set has TWO lists: List-I and List-II.
- List-I has Four entries (P), (Q), (R) and (S) and List-II has Five entries (1), (2), (3), (4) and (5).
- FOUR options are given in each Multiple Choice Question based on List-I and List-II and ONLY ONE of these four options satisfies the condition asked in the Multiple Choice Question.
- Answer to each question will be evaluated according to the following marking scheme:  
 Full Marks : +4 ONLY if the option corresponding to the correct combination is chosen;  
 Zero Marks : 0 If none of the options is chosen (i.e. the question is unanswered);  
 Negative Marks : -1 In all other cases.

14. List-I shows four configurations, each consisting of a pair of ideal electric dipole. Each dipole has a dipole moment of magnitude  $p$ , oriented as marked by arrows in the figures. In all the configurations the dipoles are fixed such that they are at a distance  $2r$  apart along the  $x$  direction. The midpoint of the line joining the two dipoles is  $X$ . The possible resultant electric fields  $\vec{E}$  at  $X$  are given in List-II.

Choose the option that describes the correct match between the entries in List-I to those in List-II.

List-I		List-II	
(P)		(1)	$\vec{E} = 0$
(Q)		(2)	$\vec{E} = -\frac{p}{2\pi\epsilon_0 r^3} \hat{j}$
(R)		(3)	$\vec{E} = -\frac{p}{4\pi\epsilon_0 r^3} (\hat{i} - \hat{j})$
(S)		(4)	$\vec{E} = \frac{p}{4\pi\epsilon_0 r^3} (2\hat{i} - \hat{j})$
		(5)	$\vec{E} = \frac{p}{\pi\epsilon_0 r^3} \hat{i}$

- (A)  $P \rightarrow 3, Q \rightarrow 1, R \rightarrow 2, S \rightarrow 4$  (B)  $P \rightarrow 4, Q \rightarrow 5, R \rightarrow 3, S \rightarrow 1$   
 (C)  $P \rightarrow 2, Q \rightarrow 1, R \rightarrow 4, S \rightarrow 5$  (D)  $P \rightarrow 2, Q \rightarrow 1, R \rightarrow 3, S \rightarrow 5$

Sol.

C

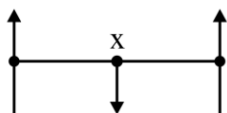
electric field at a distance  $r$  along the axial line is

$$E_{\text{axial}} = \frac{2P}{4\pi\epsilon_0 r^3} \text{ or } \frac{P}{2\pi\epsilon_0 r^3} \text{ (direction along the dipole)}$$

and at equatorial line

$$\vec{E}_{\text{eq}} = -\frac{P}{4\pi\epsilon_0 r^3}$$

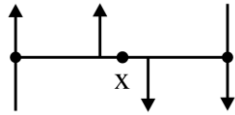
direction opp. to dipole moment



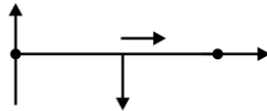
Both are at equatorial line of point  $x$

$$\text{So, } E = 2 \left( \frac{-\rho}{4\pi\epsilon_0 r^3} \right) \hat{j}$$

$$E = \frac{-P}{2\pi\epsilon_0 r^3} \hat{j} \quad (\text{P}) \rightarrow (2)$$

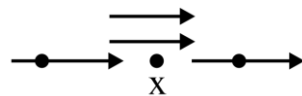


Both cancel out  $(\text{Q}) \rightarrow (1)$



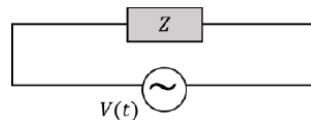
are is equatorial & other is axial

$$\text{So, both adds up each gives } \frac{P}{2\pi\epsilon_0 r^3} \hat{i} \quad \text{So, } \frac{P}{4\pi\epsilon_0 r^3} (2\hat{i} - \hat{j}) \quad (\text{R}) \rightarrow (4)$$



$$E = 2 \cdot \frac{P}{2\pi\epsilon_0 r^3} \hat{i} = \frac{P}{\pi\epsilon_0 r^3} \hat{i} \quad (\text{S}) \rightarrow (5)$$

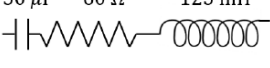
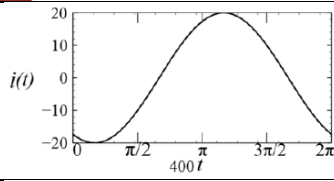
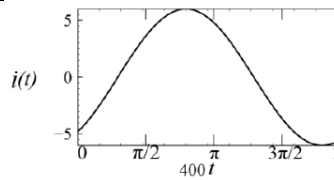
15. A circuit with an electrical load having impedance  $Z$  is connected with an AC source as shown in the diagram. The source voltage varies in time as  $V(t) = 300 \sin(400t)$  V, where  $t$  is time in s. List-I shows various options for the load. The possible currents  $i(t)$  in the circuit as a function of time are given in List-II.



Choose the option that describes the correct match between the entries in List-I to those in List-II.

	List-I		List-II
(P)	$30 \Omega$ 	(1)	
(Q)	$30 \Omega$ $100 \text{ mH}$ 	(2)	
(R)	$50 \mu\text{F}$ $30 \Omega$ $25 \text{ mH}$ 	(3)	



(S)	$50\ \mu\text{F}$ $60\ \Omega$ $125\ \text{mH}$ 	(4)	
		(5)	

(A)  $P \rightarrow 3, Q \rightarrow 5, R \rightarrow 2, S \rightarrow 1$

(B)  $P \rightarrow 1, Q \rightarrow 5, R \rightarrow 2, S \rightarrow 3$

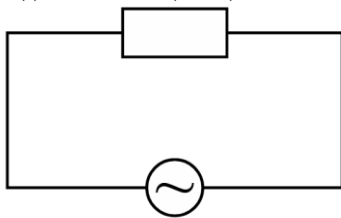
(C)  $P \rightarrow 3, Q \rightarrow 4, R \rightarrow 2, S \rightarrow 1$

(D)  $P \rightarrow 1, Q \rightarrow 4, R \rightarrow 2, S \rightarrow 5$

**Sol.**

**A**

$$V(t) = 300 \sin(400t) \text{ V}$$



$$V(t) = 300 \sin(400t)$$

(P)  $\rightarrow$  (3)

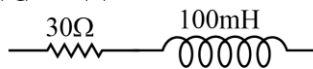


pure resistor

$$\text{So, } i = \frac{300}{30} \sin(400t) = 10 \sin(400t)$$

$$\text{Amp.} = 10$$

(Q)  $\rightarrow$  (5)



(R-L)

$$X_L = \omega L$$

$$= 400 \times 0.1 = 40\ \Omega$$

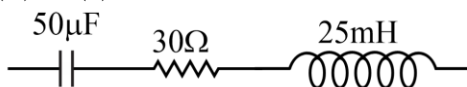
$$Z = \sqrt{X_L^2 + R^2}$$

$$Z = \sqrt{30^2 + 40^2} = 50\ \Omega$$

$$I_0 = \frac{300}{50} = 6\text{ A}$$

A  $\rightarrow$  current lags voltage graph with lag & amp-6

(R)  $\rightarrow$  (2)



$$X_C = \frac{1}{\omega C} = \frac{1}{400 \times 50 \times 10^{-6}} = 50\ \Omega$$

$$X_L = \omega L = 400 \times 0.025 = 10\ \Omega$$

$$\text{Net reactance } X = X_L - X_C$$

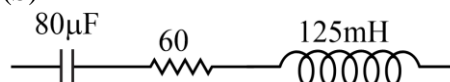
$$= 10 - 50$$

$$= -40 \leftarrow \text{capacitive}$$

$$z = \sqrt{30^2 + 40^2} = 50$$

$I_0 = 6$  so graph – (2)

(S)



$$x_c = \frac{1}{400 \times 50 \times 10^{-6}} = 50$$

$$x_L = 400 \times 0.125 = 50$$

Net reactance = 0 ← resonance

So only R left

$$R = 60$$

$$I_0 = \frac{300}{60} = 5 \quad (\text{S}) \rightarrow (1)$$

16. List-I shows various functional dependencies of energy (E) on the atomic number (Z). Energies associated with certain phenomena are given in List-II.

Choose the option that describes the correct match between the entries in List-I to those in List-II.

List-I		List-II	
(P)	$E \propto Z^2$	(1)	energy of characteristic x-rays
(Q)	$E \propto (Z - 1)^2$	(2)	electrostatic part of the nuclear bending energy for stable nuclei with mass numbers in the range 30 to 170
(R)	$E \propto Z(Z - 1)$	(3)	energy of continuous x-rays
(S)	E is practically independent of Z	(4)	average nuclear binding energy per nucleon for stable nuclei with mass number in the range 30 to 170
		(5)	energy of radiation due to electronic transitions from hydrogen-like atoms

(A)  $P \rightarrow 4, Q \rightarrow 3, R \rightarrow 1, S \rightarrow 2$

(B)  $P \rightarrow 5, Q \rightarrow 2, R \rightarrow 1, S \rightarrow 4$

(C)  $P \rightarrow 5, Q \rightarrow 1, R \rightarrow 2, S \rightarrow 4$

(D)  $P \rightarrow 3, Q \rightarrow 2, R \rightarrow 1, S \rightarrow 5$

**Sol. C**

(P)  $E \propto Z^2$  ← energy of radiation due to electronic transitions

(Q)  $E \propto (Z - 1)^2$  → energy depends on Z but slightly adjusted electrostatic pot. energy depends on  $(Z - 1)$

↓

Energy of characteristic x-ray

(R)  $E \propto Z(Z - 1)$  higher Z leads to more energetic continuous radiation

(S) E is practically dependent of Z

→ 30 to 170 binding energy is almost constant



**Mr. Nitin Vijay (NV SIR)**

मोशन है तो  
भरोसा है

**Physics**

**Chemistry**

**Math**



Name	Chandra S. Sharma (CSS Sir)	Ankush Jain (AKJ Sir)	Amit Kumar Singh (AKS Sir)	Amit Kumar Rathore (AR Sir)	Sharad Kothari (SK Sir)	Sanjay Sodhani (Sodhani Sir)	Shubham Soni (SBS Sir)
Kota Exp.	20 yrs.	15 yrs.	16 yrs.	16 yrs.	16 yrs.	16 yrs.	12 yrs.
Rank Under 100	AIR-2, 4, 5 (65+)	AIR-4, 5 (5)	10	AIR-1 (5)	AIR-1 (12)	AIR-1 (12)	16
Selection in IIT	11000+	8000+	2500+	2500+	10000+	10000+	200+
(Approx)	25000+	15000+	12000+	12000+	18000+	17000+	1000+

**Now Bigger & Stronger**  
**We Welcome Top Educators of Kota**

**ACADEMIC PILLAR OF JEE MOTION KOTA**

**PHYSICS**



Nitin Vijay (NV Sir) Founder & CEO Exp.: 22  
Avinash Kishore (AVN Sir) Sr. Faculty Exp.: 11  
Akshay Jain (AJ Sir) Sr. Faculty Exp.: 9  
Rohit Malav (RM Sir) Sr. Faculty Exp.: 13  
Sanjay Gandhi (SG Sir) Sr. Faculty Exp.: 17



Rahul Kumar (RK Sir) Sr. Faculty Exp.: 9  
Devashish Potar (Dev Sir) Faculty Exp.: 9  
Vikram Singh Meena (VKM Sir) Faculty Exp.: 7  
Deepak Jain (D. Jain Sir) Faculty Exp.: 9

**MATH**



Nikhil Srivastava (NS sir) Deputy Director Exp.: 22  
Amarnath Anand (ANNA Sir) Sr. Faculty Exp.: 21  
Atish Agarwal (AA sir) Sr. Faculty (VP-Outside Centres) Exp.: 22  
Jayant Chittora (JC sir) Sr. Faculty Exp.: 21  
Arjun Gupta (Arjun sir) Sr. Faculty Exp.: 18  
Vipin Sharma (VS sir) Sr. Faculty Exp.: 13



Deepak Singh (DPS Sir) Sr. Faculty Exp.: 19  
Krishan Kumar Soan (KKS Sir) Sr. Faculty Exp.: 19  
Indrajeet Chourasiya (IC Sir) Sr. Faculty Exp.: 16  
Ashutosh Vishivkarma (Ashutosh Sir) Faculty Exp.: 6  
Anirudha Yadav (ANY Sir) Faculty Exp.: 5

**PHYSICAL CHEMISTRY**



Ram Ratan Dwivedi (RRD sir) Sr. Faculty & Joint Director Exp.: 24  
Akhilesh Kanther (AKK sir) Sr. Faculty Exp.: 22  
Jitendra Hirwani (JH Sir) Sr. Faculty Exp.: 20  
Deepak Sharma (DS Sir) Sr. Faculty Exp.: 13



Shrawan Choudhary (SC Sir) Sr. Faculty Exp.: 9  
Shaleen Singhwal (Shaleen Sir) Faculty Exp.: 7  
Mukesh Suman (MSS Sir) Faculty Exp.: 14

**INORGANIC CHEMISTRY**



Vishal Joshi (VJ sir) Sr. Faculty Exp.: 23  
Dr. Deepak Joshi (DJ Sir) Sr. Faculty Exp.: 30  
Devki Nandan (DN sir) Sr. Faculty Exp.: 22



Ritesh Kumar (RTK Sir) Sr. Faculty Exp.: 14  
Amit Singh Sisodiya (AMIS Sir) Faculty Exp.: 12

**ORGANIC CHEMISTRY**



Surendra K. Mishra (SKM sir) Sr. Faculty Exp.: 24  
Anurag Garg (AG sir) Sr. Faculty Exp.: 22



Sachin Srivastava (SCS Sir) Sr. Faculty Exp.: 15  
Ankur Chourasia (AC Sir) Faculty Exp.: 12

**Stronger Team, Better Learning!**  
**The Best Teachers, Now Under One Roof!**

मोशन है, तो भरोसा है

**MOTION**  
18 YEARS OF LEGACY

# ADMISSION OPEN DROPPER BATCH

(12th-13th Moving Students)

Batch Starts From: **21<sup>st</sup> May & 02<sup>nd</sup> June 2025**

Get scholarships on the basis of **JEE Advanced 2025** Marks

JEE Adv. 2025 Marks	Program Fee	Final Fee
Above 125	1,65,000	FREE
124 - 105	1,65,000	25,000
104 - 95	1,65,000	45,000
94 - 85	1,65,000	65,000
Below 85	1,65,000	85,000



**(100% Selection Batch)**

JEE Adv. 2025 Marks	PROGRAM FEE	FINAL FEE
Above 125	1,65,000/-	FREE
124 - 105	1,65,000/-	25,000

Exam	Eligibility
In Main	< 20,000
JEE Advanced	IIT Selected any category / Rank
CBSE Board	95% + Written Test
Other Board	District / State Board Merit List + Written Test

Scan the **QR CODE** to get  
scholarships on the basis  
of your past achievements



Want to take a Drop?  
Watch this video





मोशन है, तो भरोसा है

**MOTION**  
18 YEARS OF LEGACY

# ONLINE **LIVE** अनुशासन



Live Classes &  
Recorded Lectures



Printed Study  
Material



Limited  
Batch Size



Daily Live Doubt Class  
& Mentorship

JEE Adv. 2025 Marks	Program Fee	Final Fee
Above 125	60,000	FREE
124 - 105	60,000	20,000
104 - 95	60,000	30,000
94 - 85	60,000	40,000
Below 85	60,000	50,000

Batch Starts From: 21<sup>st</sup> May & 02<sup>nd</sup> June 2025

**Amrit** COURSE

Complete 11th-13th  
Online Preparation Package

Starting at Just ₹ 2,500/-

Download the  
**MOTION LEARNING APP**  
& start your 2-days Free trial



# मोशन है तो भरोसा है

**MOTION**  1800 212 1799



## OUR KOTA CAMPUSES

### CORPORATE OFFICE



394 Rajeev Gandhi Nagar,  
Kota

### DAKSH CAMPUS



B-84, Road No.- 5 RIICO,  
IPIA, Kota

### DRONA CAMPUS



E-5-II Road No.1 IPIA,  
Kota

### DIGITAL CAMPUS



50, Rajeev Gandhi Nagar,  
Kota

### DRONA -2 CAMPUS



E4 (II), IPIA, Kota

### EXPERIENCE CENTER



Kunhadi, Kota

## KOTA RESIDENTIAL CAMPUSES

### DHRUV CAMPUS



Kuber Industrial Area,  
Ranpur, Kota

### DRONA RESIDENCY



E-4 I B - IPIA, Kota

### DAKSH RESIDENCY



C-159, IPIA Road No.5, Kota

### DRONA RESIDENCY



E-5 I, IPIA, Kota

### DRONA RESIDENCY



E-5-II, Road Number 1,  
IPIA, Kota