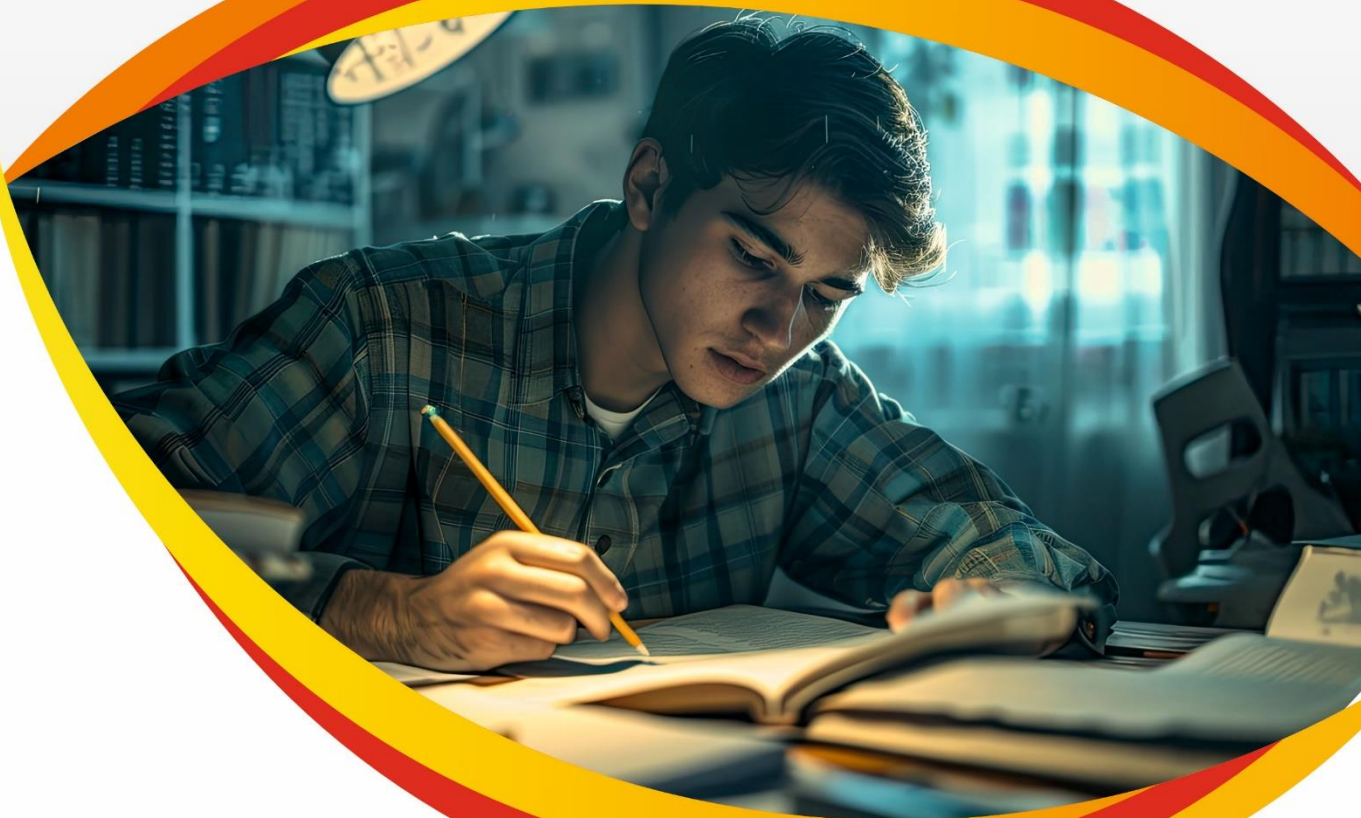


मोशन है, तो भरोसा है

MOTION
18 YEARS OF LEGACY



JEE ADVANCED 2025

QUESTION PAPER WITH SOLUTIONS

PHYSICS (PAPER-2)

SECTION 1 (Maximum Marks: 12)

- This section contains FOUR (04) questions.
- Each question has FOUR options (A), (B), (C) and (D). ONLY ONE of these four options is the correct answer.
- For each question, choose the option corresponding to the correct answer.
- Answer to each question will be evaluated according to the following marking scheme:

Full Marks : +3 If ONLY the correct option is chosen;

Zero Marks : 0 If none of the options is chosen (i.e. the question is unanswered);

Negative Marks : -1 In all other cases.

1. A temperature difference can generate e.m.f. in some materials. Let S be the e.m.f. produced per unit temperature difference between the ends of a wire, σ the electrical conductivity and k the thermal conductivity of the material of the wire. Taking M , L , T , I and K as dimensions of mass, length, time, current and temperature, respectively,

the dimensional formula of the quantity $Z = \frac{S^2 \sigma}{k}$ is:

- (A) $[M^0 L^0 T^0 I^0 K^0]$ (B) $[M^0 L^0 T^0 I^0 K^{-1}]$ (C) $[M^1 L^2 T^{-2} I^{-1} K^{-1}]$ (D) $[M^1 L^2 T^{-4} I^{-1} K^{-1}]$

Sol. B

$$[S] = \frac{[\text{Emf}]}{[\Delta T]} = \frac{[\text{Work}]}{[q][\Delta T]}$$

$$= \frac{ML^2T^{-2}}{[AT][K]}$$

$$[S] = ML^2T^{-3}A^{-1}K^{-1}$$

$$\sigma = \frac{1}{RA}$$

$$[\sigma] = M^{-1}L^{-3}T^3A^2$$

$$\frac{\Delta Q}{\Delta T} = \frac{KA\Delta T}{l} \Rightarrow K = \frac{\Delta Q l}{\Delta T A \Delta T}$$

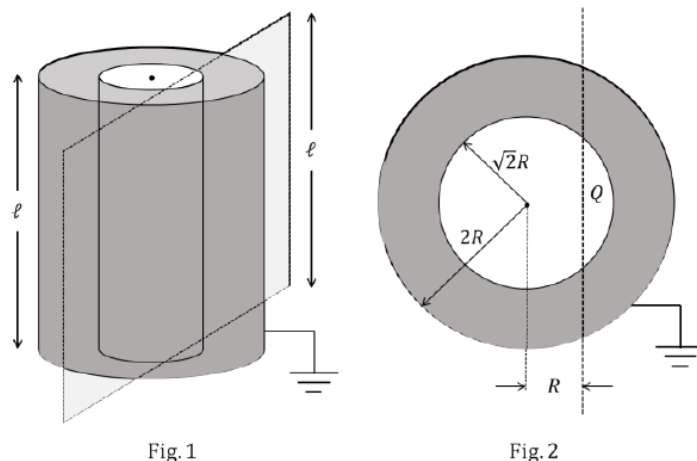
$$\Rightarrow [K] = MLT^{-3}K^{-1}$$

$$Z = \frac{S^2 \sigma}{K} = \frac{M^2 L^4 T^{-6} A^{-2} K^{-2} M^{-1} L^{-3} T^3 A^2}{MLT^{-3}K^{-1}}$$

$$= K^{-1}$$

$$= M^0 L^0 T^0 I^0 K^{-1}$$

2. Two co-axial conducting cylinders of same length ℓ with radii $\sqrt{2}R$ and $2R$ are kept, as shown in Fig. 1. The charge on the inner cylinder is Q and the outer cylinder is grounded. The annular region between the cylinders is filled with a material of dielectric constant $k = 5$. Consider an imaginary plane of the same length ℓ at a distance R from the common axis of the cylinders. This plane is parallel to the axis of the cylinders. The cross-sectional view of this arrangement is shown in Fig. 2. Ignoring edge effects, the flux of the electric field through the plane is (ϵ_0 is the permittivity of free space):



- (A) $\frac{Q}{30\epsilon_0}$ (B) $\frac{Q}{15\epsilon_0}$ (C) $\frac{Q}{60\epsilon_0}$ (D) $\frac{Q}{120\epsilon_0}$

Sol. C

Charge on outer cylinder

$$q_2 = \frac{-Q}{2\pi} \times \frac{2\pi}{3}$$

$$q_2 = -\frac{Q}{3}$$

Charge on inner cylinder

$$q_1 = \frac{+Q}{2\pi} \times \frac{\pi}{2}$$

$$q_1 = \frac{+Q}{2\pi} \times \frac{\pi}{2}$$

$$q_1 = \frac{Q}{4}$$

consider gaussian surface abcd

Total charge $Q_{\text{enc.}} = q_1 + q_2$

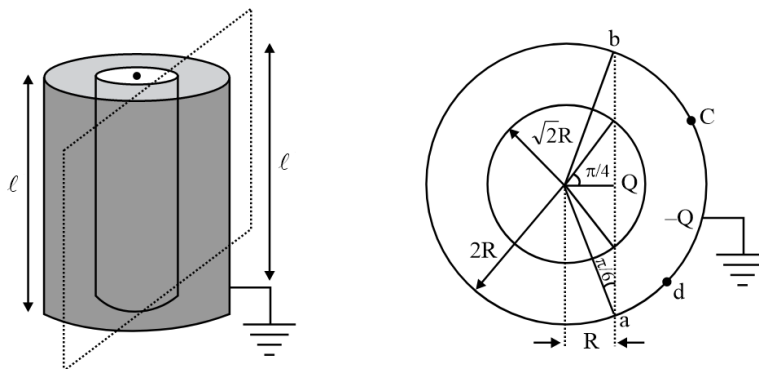
$$Q_{\text{enc.}} = +\frac{Q}{4} - \frac{Q}{3}$$

$$= \frac{3Q - 4Q}{12} = -\frac{Q}{12}$$

$$\therefore \text{flux } \phi = \frac{Q_{\text{enc.}}}{\epsilon_0 k}$$

$$|\phi| = \left| \frac{Q}{12 \times 5\epsilon_0} \right|$$

$$\phi = \frac{Q}{60\epsilon_0}$$



3. As shown in the figures, a uniform rod OO' of length l is hinged at the point O and held in place vertically between two walls using two massless springs of same spring constant. The springs are connected at the midpoint and at the top-end (O') of the rod, as shown in Fig. 1 and the rod is made to oscillate by a small angular displacement. The frequency of oscillation of the rod is f_1 . On the other hand, if both the springs are connected at the midpoint of the rod, as shown in Fig. 2 and the rod is made to oscillate by a small angular displacement, then the frequency of oscillation is f_2 . Ignoring gravity and assuming motion only in the plane of the diagram, the value of $\frac{f_1}{f_2}$ is:

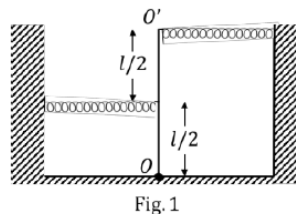


Fig. 1

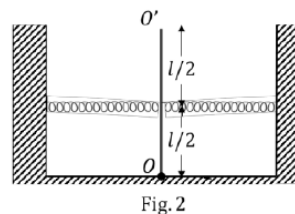
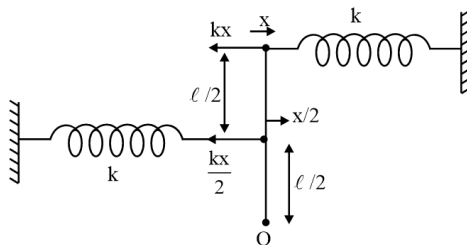


Fig. 2

- (A) 2 (B) $\sqrt{2}$ (C) $\sqrt{\frac{5}{2}}$ (D) $\sqrt{\frac{2}{5}}$

Sol. C



Take moment of forces about hinge O

$$kx \ell + \frac{kx}{2} \times \frac{\ell}{2} = \frac{m\ell^2}{3} \alpha_1$$

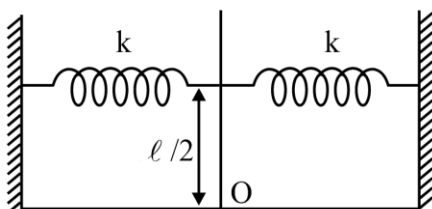
$$\frac{5}{4} kx \ell = \frac{m\ell^2}{3} \alpha_1$$

$$\alpha_1 = \left(\frac{15}{4} \frac{k}{m\ell} \right) x$$

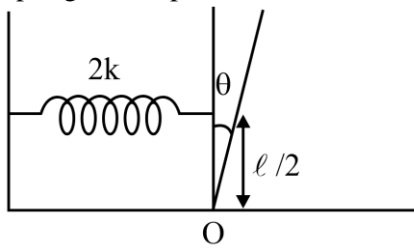
$$\alpha_1 = \left(\frac{15}{4} \frac{k}{m\ell} \right) (\ell \theta)$$

$$\alpha_1 = \left(\frac{15}{4} \frac{k}{m} \right) \theta$$

$$\omega_1 = \sqrt{\frac{15k}{4m}}$$



Springs are in parallel connection



$$2k \frac{l}{2} \theta \times \frac{l}{2} = \frac{m l^2}{3} \alpha_2$$

$$\alpha_2 = \left(\frac{3k}{2m} \right) \theta$$

$$\omega_2 = \sqrt{\frac{3k}{2m}}$$

$$\frac{f_1}{f_2} = \frac{\omega_1}{\omega_2} = \sqrt{\frac{15k}{4m}} \times \sqrt{\frac{2m}{3k}} = \sqrt{\frac{5}{2}}$$

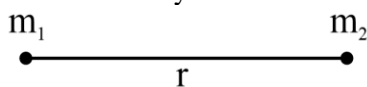
4. Consider a star of mass m_2 kg revolving in a circular orbit around another star of mass m_1 kg with $m_1 \gg m_2$. The heavier star slowly acquires mass from the lighter star at a constant rate of γ kg/s. In this transfer process, there is no other loss of mass. If the separation between the centers of the stars is r , then its relative rate of change $\frac{1}{r} \frac{dr}{dt}$ (in s^{-1}) is given by :

(A) $-\frac{3\gamma}{2m_2}$ (B) $-\frac{2\gamma}{m_2}$ (C) $-\frac{2\gamma}{m_1}$ (D) $-\frac{3\gamma}{2m_1}$

Sol.

B

Consider binary star



Angular momentum, $L = \mu r^2 \omega = \text{constant}$

$$\frac{dL}{dt} = 0$$

$$\left(\mu = \frac{m_1 m_2}{m_1 + m_2} = m_2 \quad (\text{as } m_1 \gg m_2) \right)$$

$$\Rightarrow \frac{d}{dt}(\mu r^2 \omega) = 0$$

$$\Rightarrow r^2 \omega \frac{d\mu}{dt} + \mu \omega \frac{dr^2}{dt} + \mu r^2 \frac{d\omega}{dt} = 0$$

$$\Rightarrow r^2 \omega \frac{d\mu}{dt} + \mu \omega (2r) \frac{dr}{dt} + \mu r^2 \frac{d\omega}{dt} = 0$$

$$\left(\omega = \frac{v}{r} = \sqrt{\frac{Gm_1}{r^3}} \right)$$

$$\Rightarrow \gamma r v + 2m_2 v \frac{dr}{dt} - \frac{3}{2} m_2 v \frac{dr}{dt} = 0$$

$$\Rightarrow \gamma r v + \frac{1}{2} m_2 v \frac{dr}{dt} = 0 \quad \dots (1)$$

Divide (1) by rv

$$\gamma + \frac{1}{2}m_2 \left(\frac{1}{r} \frac{dr}{dt} \right) = 0$$

$$\frac{1}{r} \frac{dr}{dt} = -\frac{\gamma}{2m_2}$$

SECTION 2 (Maximum Marks: 16)

- This section contains FOUR (04) questions.
- Each question has FOUR options (A), (B), (C) and (D). ONE OR MORE THAN ONE of these four option(s) is(are) correct answer(s).
- For each question, choose the option(s) corresponding to (all) the correct answer(s).
- Answer to each question will be evaluated according to the following marking scheme:

Full Marks : +4 ONLY if (all) the correct option(s) is(are) chosen;

Partial Marks : +3 If all the four options are correct but ONLY three options are chosen;

Partial Marks : +2 If three or more options are correct but ONLY two options are chosen, both of which are correct;

Partial Marks : +1 If two or more options are correct but ONLY one option is chosen and it is a correct option;

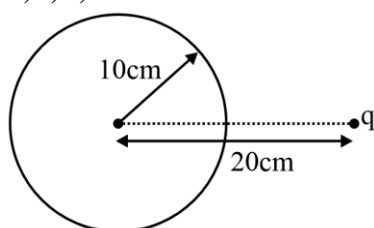
Zero Marks : 0 If none of the options is chosen (i.e. the question is unanswered);

Negative Marks : -2 In all other cases.

- For example, in a question, if (A), (B) and (D) are the ONLY three options corresponding to correct answers, then choosing ONLY (A), (B) and (D) will get +4 marks;
 choosing ONLY (A) and (B) will get +2 marks;
 choosing ONLY (A) and (D) will get +2 marks;
 choosing ONLY (B) and (D) will get +2 marks;
 choosing ONLY (A) will get +1 mark;
 choosing ONLY (B) will get +1 mark;
 choosing ONLY (D) will get +1 mark;
 choosing no option (i.e. the question is unanswered) will get 0 marks; and
 choosing any other combination of options will get -2 marks.

5. A positive point charge of 10^{-8} C is kept at a distance of 20 cm from the center of a neutral conducting sphere of radius 10 cm. The sphere is then grounded and the charge on the sphere is measured. The grounding is then removed and subsequently the point charge is moved by a distance of 10 cm further away from the center of the sphere along the radial direction. Taking $\frac{1}{4\pi\epsilon_0} = 9 \times 10^9 \text{ Nm}^2/\text{C}^2$ (where ϵ_0 is the permittivity of free space), which of the following statements is/are correct:
- (A) Before the grounding, the electrostatic potential of the sphere is 450 V.
 (B) Charge flowing from the sphere to the ground because of grounding is 5×10^{-9} C.
 (C) After the grounding is removed, the charge on the sphere is -5×10^{-9} C.
 (D) The final electrostatic potential of the sphere is 300 V.

Sol. A,B,C,D



Radius (R) = 10 cm = 0.1 m

$d_1 = 20 \text{ cm} = 0.2 \text{ m}$

Before grounding:-

Potential due to charge q

$$V = \frac{kq}{d_1} = \frac{9 \times 10^9 \times 10^{-8}}{2}$$

$V = 450 \text{ volt}$

After grounding:-

charge induced on the sphere

$$q' = - \frac{Rq}{d_1}$$

$$q' = \frac{-0.1 \times 10^{-8}}{0.2}$$

$$q' = -5 \times 10^{-9} \text{ C} \Rightarrow |q'| = 5 \times 10^{-9} \text{ C}$$

After grounding is removed total charge remains same

Case-II :-

$R = 0.1 \text{ m}$

$d_2 = 0.3 \text{ m}$

Now, potential

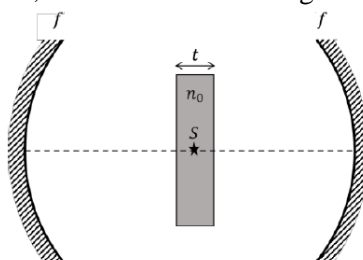
$$V_1 = \frac{kq}{d_2} = \frac{9 \times 10^9 \times 10^{-8}}{0.3}$$

$$V_1 = 30 \times 10$$

$$V_1 = 300 \text{ volt}$$

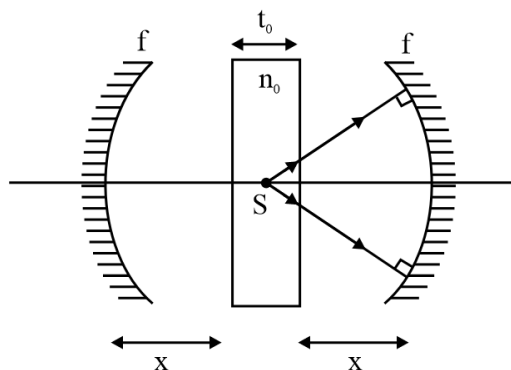
\therefore the correct option are A,B,C,D

6. Two identical concave mirrors each of focal length f are facing each other as shown in the schematic diagram. The focal length f is much larger than the size of the mirrors. A glass slab of thickness t and refractive index n_0 is kept equidistant from the mirrors and perpendicular to their common principal axis. A monochromatic point light source S is embedded at the center of the slab on the principal axis, as shown in the schematic diagram. For the image to be formed on S itself, which of the following distances between the two mirrors is/are correct:



- (A) $4f + \left(1 - \frac{1}{n_0}\right)t$ (B) $2f + \left(1 - \frac{1}{n_0}\right)t$ (C) $4f + (n_0 - 1)t$ (D) $2f + (n_0 - 1)t$

Sol. A,B



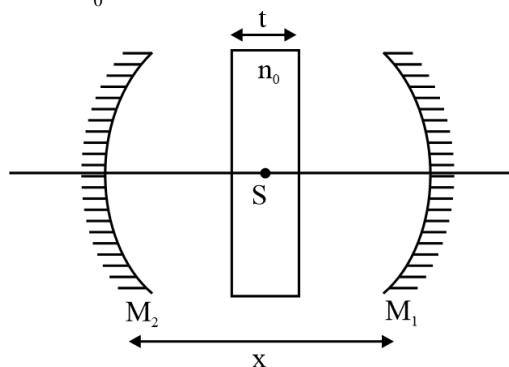
$$d' = \frac{\frac{t_0}{n_0}}{1} = \frac{t_0}{2n_0}$$

$$\frac{t_0}{2n_0} + x = 2f$$

$$x = 2f - \frac{t_0}{2n_0}$$

$$\text{distance} = 2x + t_0$$

$$= 4f - \frac{t_0}{n_0} + t_0$$



If image formed by M_1 & then shift produced by slab will formed on pole of M_2

$$\frac{1}{v} + \frac{1}{-\left[\frac{x-s}{2}\right]} = \frac{1}{-f}$$

$$\frac{1}{v} = \frac{2}{x-s} - \frac{1}{f}$$

$$\frac{1}{v} = \frac{2f - x + s}{fx - fs}$$

$$-v = \frac{fx - fs}{x - 2f - s}$$

$$-v + s = x$$

$$\frac{fx - fs}{x - 2f - s} + s = x$$

$$\frac{f}{x - 2f - s} = 1$$

$$f = x \times 2f - s$$

$$x = 2f + s = 3f + t_0 - \frac{t_0}{n}$$

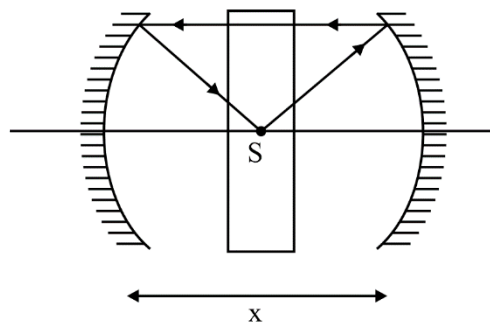
$$\frac{x-t}{2} + \frac{t}{2n} = f$$

$$x = \left(f - \frac{t}{2n} + \frac{t}{2} \right) 2$$

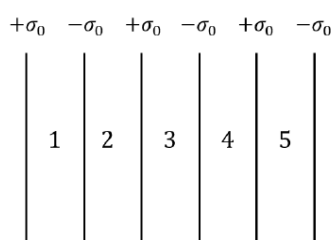
$$x = 2f - \frac{t}{n} + t$$

$$x = 2f + \left(1 - \frac{1}{n} \right) t$$

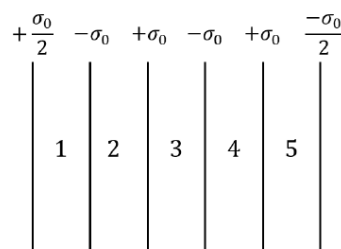
So, option A, & B are correct.



7. Six infinitely large and thin non-conducting sheets are fixed in configurations I and II. As shown in the figure, the sheets carry uniform surface charge densities which are indicated in terms of σ_0 . The separation between any two consecutive sheets is $1 \mu\text{m}$. The various regions between the sheets are denoted as 1, 2, 3, 4 and 5. If $\sigma_0 = 9 \mu\text{C}/\text{m}^2$, then which of the following statements is/are correct:
(Take permittivity of free space $\epsilon_0 = 9 \times 10^{-12} \text{ F/m}$)



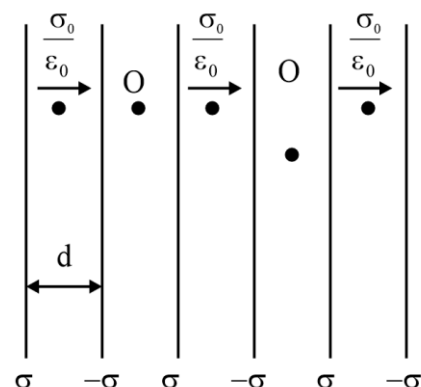
Configuration I



Configuration II

- (A) In region 4 of the configuration I, the magnitude of the electric field is zero.
(B) In region 3 of the configuration II, the magnitude of the electric field is $\frac{\sigma_0}{\epsilon_0}$.
(C) Potential difference between the first and the last sheets of the configuration I is 5 V.
(D) Potential difference between the first and the last sheets of the configuration II is zero.

Sol. A

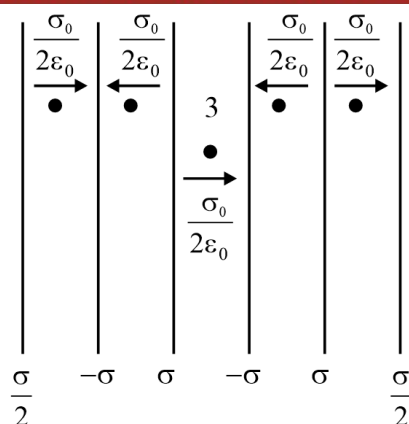


$$\Delta V = \frac{\sigma d \times 3}{\epsilon_0}$$

between first and last plate = 3 volt

$E_{\text{at point 4}} = 0$

E because due to each sheet $E = \frac{\sigma}{2\epsilon_0}$



$$E_3 = \frac{\frac{\sigma}{2} \times 2}{2\epsilon_0} = \frac{\sigma}{2\epsilon_0}$$

$$\Delta V \neq 0$$

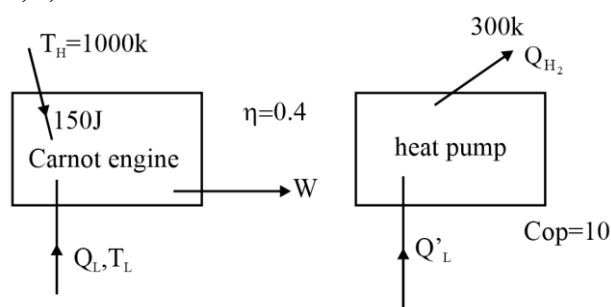
between first and last plate

correct option is A

8. The efficiency of a Carnot engine operating with a hot reservoir kept at a temperature of 1000 K is 0.4. It extracts 150 J of heat per cycle from the hot reservoir. The work extracted from this engine is being fully used to run a heat pump which has a coefficient of performance 10. The hot reservoir of the heat pump is at a temperature of 300 K. Which of the following statements is/are correct:

- (A) Work extracted from the Carnot engine in one cycle is 60 J.
(B) Temperature of the cold reservoir of the Carnot engine is 600 K.
(C) Temperature of the cold reservoir of the heat pump is 270 K.
(D) Heat supplied to the hot reservoir of the heat pump in one cycle is 540 J.

Sol. **A,B,C**



$$0.4 = 1 - \frac{Q_L}{Q_{H_1}}$$

$$\frac{Q_L}{Q_{H_1}} = 0.6$$

$$Q_L = 90 \text{ J}$$

$$\frac{Q_L}{Q_{H_1}} = \frac{T_L}{T_{H_1}}$$

$$\frac{90}{150} = \frac{T_L}{1000}$$

$$T_L = 600 \text{ K}$$

$$W = Q_{H_1} - Q_L$$

$$W = 150 - 90$$

$$W = 60 \text{ J}$$

$$10 = \frac{Q_{H_2}}{W}$$

$$W + Q'_L = Q_{H_2}$$

$$W + Q'_L = 10W$$

$$Q'_L = 9W$$

$$\frac{Q'_L}{Q_{H_2}} = \frac{T_L}{T_H}$$

$$\frac{9W}{10W} = \frac{T_L}{300}$$

$$T_L = 270 \text{ K}$$

SECTION 3 (Maximum Marks: 32)

- This section contains EIGHT (08) questions.
- The answer to each question is a NUMERICAL VALUE.
- For each question, enter the correct numerical value of the answer using the mouse and the onscreen virtual numeric keypad in the place designated to enter the answer.
- If the numerical value has more than two decimal places, truncate/round-off the value to TWO decimal places.
- Answer to each question will be evaluated according to the following marking scheme:
 Full Marks : +4 If ONLY the correct numerical value is entered in the designated place;
 Zero Marks : 0 In all other cases.

9. A conducting solid sphere of radius R and mass M carries a charge Q . The sphere is rotating about an axis passing through its center with a uniform angular speed ω . The ratio of the magnitudes of the magnetic dipole moment to the angular momentum about the same axis is given as $\alpha \frac{Q}{2M}$. The value of α is _____

Sol. 1.67

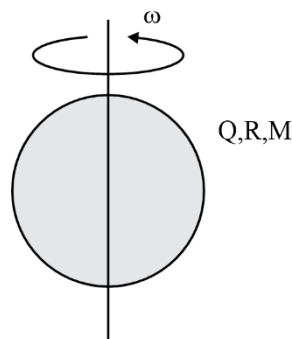
$$\frac{M}{L} = \frac{Q}{2m}$$

$$M = \frac{Q}{2m} \frac{2}{3} m R^2 \omega \quad \dots(1)$$

$$L_{\text{solid sp.}} = \frac{2}{5} m R^2 \omega \quad \dots(2)$$

$$(1)/(2)$$

$$\frac{5}{3} = 1.67$$

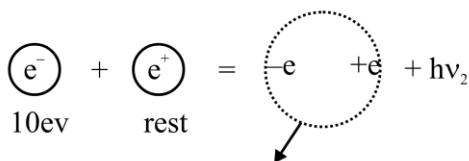


10. A hydrogen atom, initially at rest in its ground state, absorbs a photon of frequency ν_1 and ejects the electron with a kinetic energy of 10 eV. The electron then combines with a positron at rest to form a positronium atom in its ground state and simultaneously emits a photon of frequency ν_2 . The center of mass of the resulting positronium atom moves with a kinetic energy of 5 eV. It is given that positron has the same mass as that of electron and the positronium atom can be considered as a Bohr atom, in which the electron and the positron orbit around their center of mass. Considering no other energy loss during the whole process, the difference between the two photon energies (in eV) is _____

Sol. 11.8

$$h\nu_1 - 13.6 = 10$$

$$h\nu_1 = 23.6 \text{ eV}$$



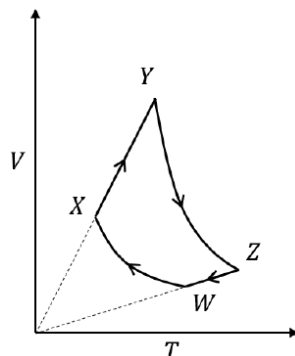
$$\text{Energy of positronium atom due to motion of } e^- \text{ \& } e^+ \text{ is } -13.6 \frac{z^2}{n^2} \frac{\mu}{m_e} = -(13.6) \frac{1}{1} \times \frac{\frac{m_e}{2}}{m_e} = -6.8 \text{ eV}$$

$$h\nu_2 + 5 \text{ eV} - 6.8 \text{ eV} = 10 \text{ eV}$$

$$h\nu_2 = 11.8 \text{ eV}$$

$$h\nu_1 - h\nu_2 = 11.8 \text{ eV}$$

11. An ideal monatomic gas of n moles is taken through a cycle WXYZW consisting of consecutive adiabatic and isobaric quasi-static processes, as shown in the schematic V-T diagram. The volume of the gas at W, X and Y points are, 64 cm^3 , 125 cm^3 and 250 cm^3 , respectively. If the absolute temperature of the gas T_w at the point W is such that $nRT_w = 1 \text{ J}$ (R is the universal gas constant), then the amount of heat absorbed (in J) by the gas along the path XY is _____



Sol. 1.6

$$(1) T_w (64)^{2/3} = T_x (125)^{2/3}$$

$$T_x = \frac{16}{25} T_w$$

$$(2) T_y = 2T_x$$

$$(3) Q_{xy} = nC_p (T_y - T_x)$$

$$= \frac{5}{2} \cdot nR \frac{16}{25} T_w = 1.6 \text{ J}$$

12. A geostationary satellite above the equator is orbiting around the earth at a fixed distance r_1 from the center of the earth. A second satellite is orbiting in the equatorial plane in the opposite direction to the earth's rotation, at a distance r_2 from the center of the earth, such that $r_1 = 1.21 r_2$. The time period of the second satellite as measured from the geostationary satellite is $\frac{24}{p}$ hours. The value of p is _____

Sol. 2.331

$$T^2 \propto r^3$$

$$\frac{T_1^2}{T_2^2} = \left(\frac{r_1}{r_2} \right)^3$$

$$\frac{24^2}{T_2^2} = (1.21)^3$$

$$T_2 = \frac{24}{(1.21)^{3/2}}$$

$$T_{\text{relative}} = \frac{1}{\frac{1}{T_1} + \frac{1}{T_2}}$$

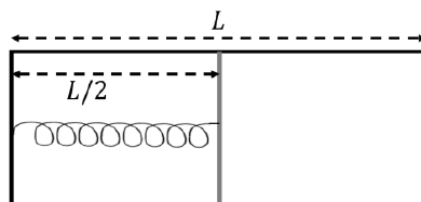
$$= \frac{1}{\frac{1}{24} + \frac{(1.21)^{3/2}}{24}} = \frac{24}{1 + (1.21)^{3/2}}$$

$$\Rightarrow \frac{24}{1 + (1.21)^{3/2}} = \frac{24}{p}$$

$$\Rightarrow p = 1 + \left(\frac{121}{100} \right)^{3/2} = 1 + \left(\frac{11}{10} \right)^3$$

$$= 1 + 1.331 = 2.3312$$

13. The left and right compartments of a thermally isolated container of length L are separated by a thermally conducting, movable piston of area A . The left and right compartments are filled with $\frac{3}{2}$ and 1 moles of an ideal gas, respectively. In the left compartment the piston is attached by a spring with spring constant k and natural length $\frac{2L}{5}$. In thermodynamic equilibrium, the piston is at a distance $\frac{L}{2}$ from the left and right edges of the container as shown in the figure. Under the above conditions, if the pressure in the right compartment is $P = \frac{kL}{A}\alpha$, then the value of α is _____



Sol. 0.2

$$(1) P_1 - \frac{K}{A} \left[\frac{L}{2} - \frac{2L}{5} \right] = P_2$$

$$P_1 = P_2 + \frac{KL}{10A}$$

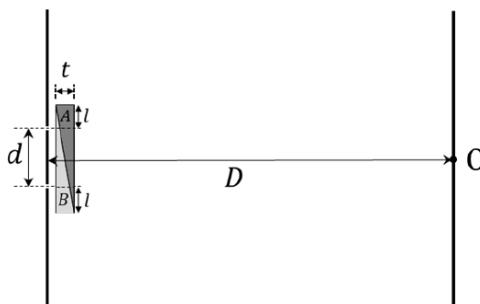
$$(2) \frac{P_1 V_1}{n_1} = \frac{P_2 V_2}{n_2}$$

$$\left(P_2 + \frac{KL}{10A} \right) \frac{2}{3} = P_2$$

$$P_2 = \frac{KL}{5A}$$

$$\alpha = \frac{1}{5} = 0.2$$

14. In a Young's double slit experiment, a combination of two glass wedges A and B, having refractive indices 1.7 and 1.5, respectively, are placed in front of the slits, as shown in the figure. The separation between the slits is $d = 2$ mm and the shortest distance between the slits and the screen is $D = 2$ m. Thickness of the combination of the wedges is $t = 12 \mu\text{m}$. The value of l as shown in the figure is 1 mm. Neglect any refraction effect at the slanted interface of the wedges. Due to the combination of the wedges, the central maximum shifts (in mm) with respect to O by _____



Sol. 1.2

$$(1) \frac{t}{4} = 3\mu\text{m} \text{ and } \frac{3t}{4} = 9\mu\text{m}$$

(2) for CBF

$$3(1.7) + 9(1.5) - (3(1.5) - 9(1.7)) = d \sin \theta$$

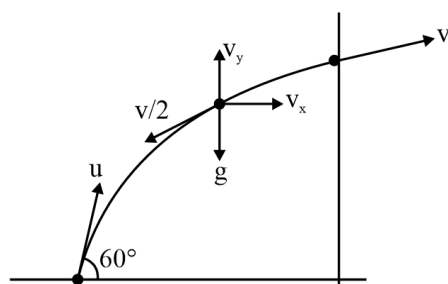
$$-1.2\mu\text{m} = d \left(\frac{y}{D} \right)$$

$$y = - \frac{1.2\mu\text{m} \times 2\text{m}}{2\text{mm}}$$

$$y = -1.2 \text{ mm}$$

- 15.** A projectile of mass 200 g is launched in a viscous medium at an angle 60° with the horizontal, with an initial velocity of 270 m/s. It experiences a viscous drag force $\vec{F} = c\vec{v}$ where the drag coefficient $c = 0.1\text{kg/s}$ and \vec{v} is the instantaneous velocity of the projectile. The projectile hits a vertical wall after 2 s. Taking $e = 2.7$, the horizontal distance of the wall from the point of projection (in m) is _____

Sol. 170



$$(1) \frac{dv_x}{dt} = -\frac{v_x}{2}$$

$$\frac{dv_x}{v_x} = -\frac{dt}{2}$$

$$\ln \frac{v_x}{u_x} = -1$$

$$v_x = \frac{u_x}{e}$$

$$(2) v_x \frac{dv_x}{dx} = -\frac{v_x}{2}$$

$$dv_x = -\frac{dx}{2}$$

$$\frac{u_x}{e} - \frac{u_x}{2} = -\frac{x}{2}$$

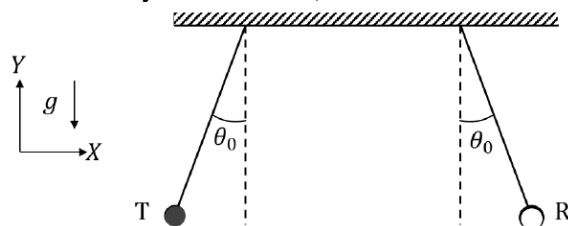
$$x = u - \frac{2u_x}{e}$$

$$= 270 - 2 \times \frac{270}{2.7} \cos 60^\circ$$

$$= 270 - 100$$

$$= 170 \text{ m}$$

16. An audio transmitter (T) and a receiver (R) are hung vertically from two identical massless strings of length 8 m with their pivots well separated along the X axis. They are pulled from the equilibrium position in opposite directions along the X axis by a small angular amplitude $\theta_0 = \cos^{-1}(0.9)$ and released simultaneously. If the natural frequency of the transmitter is 660 Hz and the speed of sound in air is 330 m/s, the maximum variation in the frequency (in Hz) as measured by the receiver (Take the acceleration due to gravity $g = 10 \text{ m/s}^2$) is ____



Sol. 96

$$(1) v_{\max} = \sqrt{2g\ell(1 - \cos \theta)}$$

$$= 12 \text{ m/s}$$

$$(2) f_{\max} - f_{\min} = f_0 \left[\frac{C + v}{C - v} - \left(\frac{C - v}{C + v} \right) \right]$$

$$= 96 \text{ Hz}$$



Mr. Nitin Vijay (NV Sir)

मोशन है तो
भरोसा है

Physics

Chemistry

Math



Name	Chandra S. Sharma (CSS Sir)	Ankush Jain (AKJ Sir)	Amit Kumar Singh (AKS Sir)	Amit Kumar Rathore (AR Sir)	Sharad Kothari (SK Sir)	Sanjay Sodhani (Sodhani Sir)	Shubham Soni (SBS Sir)
Kota Exp.	20 yrs.	15 yrs.	16 yrs.	16 yrs.	16 yrs.	16 yrs.	12 yrs.
Rank Under 100	AIR-2, 4, 5 (65+)	AIR-4, 5 (5)	10	AIR-1 (5)	AIR-1 (12)	AIR-1 (12)	16
Selection in IIT	11000+	8000+	2500+	2500+	10000+	10000+	200+
(Approx)	25000+	15000+	12000+	12000+	18000+	17000+	1000+

Now Bigger & Stronger
We Welcome Top Educators of Kota

ACADEMIC PILLAR OF JEE MOTION KOTA

PHYSICS



MATH



PHYSICAL CHEMISTRY



INORGANIC CHEMISTRY



ORGANIC CHEMISTRY



Stronger Team, Better Learning!
The Best Teachers, Now Under One Roof!

मोशन है, तो भरोसा है

MOTION
18 YEARS OF LEGACY

ADMISSION OPEN DROPPER BATCH

(12th-13th Moving Students)

Batch Starts From: **21st May & 02nd June 2025**

Get scholarships on the basis of **JEE Advanced 2025** Marks

JEE Adv. 2025 Marks	Program Fee	Final Fee
Above 125	1,65,000	FREE
124 - 105	1,65,000	25,000
104 - 95	1,65,000	45,000
94 - 85	1,65,000	65,000
Below 85	1,65,000	85,000



(100% Selection Batch)

JEE Adv. 2025 Marks	PROGRAM FEE	FINAL FEE
Above 125	1,65,000/-	FREE
124 - 105	1,65,000/-	25,000

Exam	Eligibility
In Main	< 20,000
JEE Advanced	IIT Selected any category / Rank
CBSE Board	95% + Written Test
Other Board	District / State Board Merit List + Written Test

Scan the **QR CODE** to get
scholarships on the basis
of your past achievements



Want to take a Drop?
Watch this video



मोशन है, तो भरोसा है

MOTION
18 YEARS OF LEGACY

ONLINE **LIVE** अनुशासन



Live Classes &
Recorded Lectures



Printed Study
Material



Limited
Batch Size



Daily Live Doubt Class
& Mentorship

JEE Adv. 2025 Marks	Program Fee	Final Fee
Above 125	60,000	FREE
124 - 105	60,000	20,000
104 - 95	60,000	30,000
94 - 85	60,000	40,000
Below 85	60,000	50,000

Batch Starts From: 21st May & 02nd June 2025

Amrit COURSE

Complete 11th-13th
Online Preparation Package

Starting at Just ₹ 2,500/-

Download the
MOTION LEARNING APP
& start your 2-days Free trial



मोशन है तो भरोसा है

MOTION  1800 212 1799



OUR KOTA CAMPUSES

CORPORATE OFFICE



394 Rajeev Gandhi Nagar,
Kota

DAKSH CAMPUS



B-84, Road No.- 5 RIICO,
IPIA, Kota

DRONA CAMPUS



E-5-II Road No.1 IPIA,
Kota

DIGITAL CAMPUS



50, Rajeev Gandhi Nagar,
Kota

DRONA -2 CAMPUS



E4 (II), IPIA, Kota

EXPERIENCE CENTER



Kunhadi, Kota

KOTA RESIDENTIAL CAMPUSES

DHRUV CAMPUS



Kuber Industrial Area,
Ranpur, Kota

DRONA RESIDENCY



E-4 I B - IPIA, Kota

DAKSH RESIDENCY



C-159, IPIA Road No.5, Kota

DRONA RESIDENCY



E-5 I, IPIA, Kota

DRONA RESIDENCY



E-5-II, Road Number 1,
IPIA, Kota