

**COURSE STRUCTURE**  
**CLASS XII (2023-24)**

**One Theory Paper Time: 3 Hours**

**Max. Marks: 80**

Units		No. of periods	Marks
<b>A</b>	<b>Indian Society</b>		
	1. Introducing Indian Society	0	Non-evaluative
	2. The Demographic Structure of Indian Society	10	10
	3. Social Institutions: Continuity and Change	12	10
	5. Patterns of Social Inequality and Exclusion	18	10
	6. The Challenges of Cultural Diversity	22	10
	7. Suggestions for Project Work	10	Non-evaluative
		<b>Total</b>	<b>40</b>
<b>B</b>	<b>Social Change and Development in India</b>		
	8. Structural Change	8	5
	9. Cultural Change	12	5
	11. Change and Development in Rural Society	10	10
	12. Change and Development in Industrial Society	12	10
	15. Social Movements	18	10
		<b>Total</b>	<b>40</b>
	<b>Total</b>	<b>132</b>	<b>80</b>

**COURSE CONTENT**

<b>A.</b>	<b>INDIAN SOCIETY</b>	<b>40 Marks</b>
Unit 1	<b>Introducing Indian Society</b> <ul style="list-style-type: none"> <li>• Colonialism, Nationalism, Class and Community (<b>Non-evaluative</b>)</li> </ul>	0 Periods
Unit 2	<b>The Demographic Structure of the Indian Society</b> <ul style="list-style-type: none"> <li>• Theories and concepts in demography</li> </ul>	10 Periods

	<ul style="list-style-type: none"> <li>• Rural-Urban Linkages and Divisions</li> <li>• Population Policy in India</li> </ul>	
Unit 3	<b>Social Institutions: Continuity and Change</b> <ul style="list-style-type: none"> <li>• Caste and the Caste System</li> <li>• Tribal Communities</li> <li>• Family and Kinship</li> </ul>	12 Periods
Unit 5	<b>Patterns of Social Inequality and Exclusion</b> <ul style="list-style-type: none"> <li>• Social Inequality and Social Exclusion</li> <li>• Systems justifying and perpetuating Inequality - Caste, Tribe, the Other Backward Classes</li> <li>• Adivasi Struggles</li> <li>• The Struggle for Women's Equality and Rights</li> <li>• The struggles of the Differently Abled</li> </ul>	18 Periods
Unit 6	<b>The Challenges of Cultural Diversity</b> <ul style="list-style-type: none"> <li>• Cultural communities and the nation state</li> <li>• Regionalism in the Indian context</li> <li>• The Nation state and religion related issues and identities</li> <li>• Communalism, secularism and the nation state</li> <li>• State and Civil Society</li> </ul>	22 Periods
Unit 7	<b>Suggestions for Project Work</b>	10 Periods
<b>B.</b>	<b>SOCIAL CHANGE AND DEVELOPMENT IN INDIA</b>	<b>40 Marks</b>
Unit 8	<b>Structural Change</b> <ul style="list-style-type: none"> <li>• Understanding Colonialism, Industrialization, Urbanization</li> </ul>	8 Periods
Unit 9	<b>Cultural Change</b> <ul style="list-style-type: none"> <li>• Social Reform Movements</li> <li>• Different Kinds of Social Change: Sanskritisation,</li> </ul>	12 Periods

	Westernization, Modernization, Secularization	
Unit 11	<p><b>Change and Development in Rural Society</b></p> <ul style="list-style-type: none"> <li>• Agrarian Structure : Caste &amp; class in Rural India</li> <li>• Land Reforms, Green Revolution and Emerging Agrarian society</li> <li>• Green revolution and its social consequences</li> <li>• Transformation in Rural Society</li> <li>• Circulation of labour</li> <li>• Globalization, Liberalization and Rural Society</li> </ul>	10 Periods
Unit 12	<p><b>Change and Development in Industrial Society</b></p> <ul style="list-style-type: none"> <li>• From Planned Industrialization to Liberalization</li> <li>• How people find Jobs</li> <li>• Work Processes: How work is carried out, working conditions, home based work, Strikes and Unions</li> </ul>	12 Periods
Unit 15	<p><b>Social Movements</b></p> <ul style="list-style-type: none"> <li>• Concept of Social Movements</li> <li>• Theories and Classification of Social Movements</li> <li>• Environmental Movements</li> <li>• Class-Based Movements: Workers, Peasants</li> </ul>	18 Periods

	<ul style="list-style-type: none"> <li>• Caste-Based Movements: Dalit Movement, Backward Class/Castes, Trends in Upper Caste Responses</li> <li>• Tribal Movements</li> <li>• Women's Movements in Independent India</li> </ul>	
--	---	--

<b>PROJECT WORK</b>	
<b>Periods: 40</b>	
<b>Max. Marks: 20</b>	
C. Project undertaken during the academic year at school level <ol style="list-style-type: none"> <li>1. Introduction -2 Marks</li> <li>2. Statement of Purpose – 2 Marks</li> <li>3. Research Question – 2 Marks</li> <li>4. Methodology – 3 Marks</li> <li>5. Data Analysis – 4 Marks</li> <li>6. Conclusion – 2 Marks</li> </ol>	<b>15 Marks</b>
D. Viva – based on the project work	<b>05 Marks</b>

**Prescribed Books:**

1. Introducing Sociology, Class XI, Published by NCERT
2. Understanding Society, Class XI, Published by NCERT
3. Indian Society, Class XII, Published by NCERT
4. Social Change and Development in India, Class XII, published by NCERT

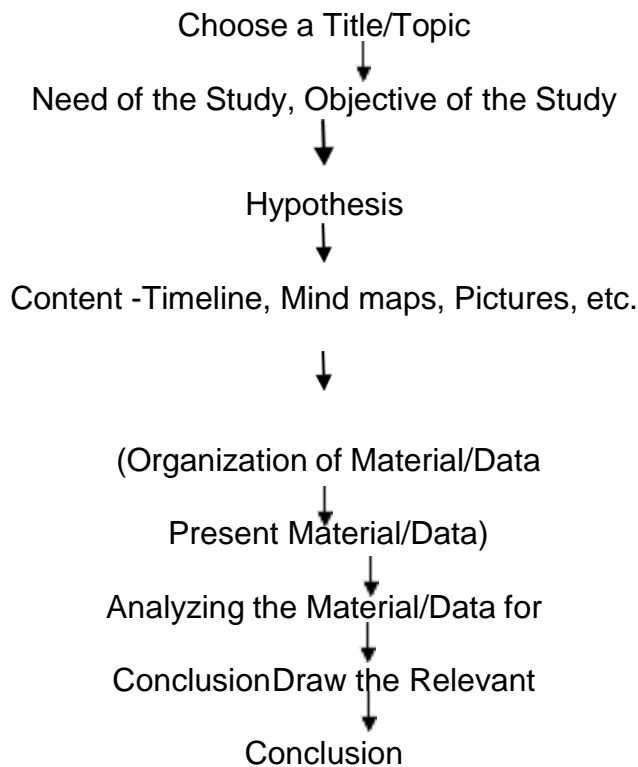
**SOCIOLOGY (Code No. 039)**  
**QUESTION PAPER DESIGN**  
**CLASS XII (2023-24)**

<b>S.No.</b>	<b>Competencies</b>	<b>Total Marks</b>	<b>Weightage (%)</b>
<b>1</b>	<p>Knowledge &amp; understanding  Exhibit memory of previously learned material by recalling facts, terms, basic concepts, and answers. Demonstrate understanding of facts and ideas by organizing, comparing, translating, interpreting, giving descriptions, and stating main ideas</p>	<b>30</b>	<b>37.5%</b>
<b>2</b>	<p>Application of Knowledge and Concepts  Solve problems to new situations by applying acquired knowledge, facts, techniques and rules in a different way. Examine and break information into parts by identifying motives or causes. Make inferences and find evidence to support generalizations</p> <p>Present and defend opinions by making judgments about information, validity of ideas, or quality of work based on a set of criteria.</p>	<b>32</b>	<b>40%</b>
<b>3</b>	<p>Formulate, Analyse , Evaluate &amp; Create  Compile information together in a different way by Combining elements in a new pattern or proposing alternative solutions.</p>	<b>18</b>	<b>22.5%</b>
	<b>Total</b>	<b>80</b>	<b>100%</b>

**Note: Kindly refer to the guidelines on project work for class XI and XII given below: -**  
**Guidelines for Sociology Project Work: 20 Marks**  
One Project to be done throughout the session, as per the existing scheme.

**1. Steps involved in the conduct of the project:**

Students may work upon the following lines as a suggested flow chart:



Bibliography

**2. Expected Checklist for the Project Work:**

- Introduction of topic/title
- Identifying the causes, events, consequences and/or remedies
- Various stakeholders and effect on each of them
- Advantages and disadvantages of situations or issues identified
- Short-term and long-term implications of strategies suggested during research
- Validity, reliability, appropriateness, and relevance of data used for research work and for presentation in the project file
- Presentation and writing that is succinct and coherent in project file
- Citation of the materials referred to, in the file in footnotes, resources section, bibliography etc.

### **3. Assessment of Project Work:**

- Project Work has broadly the following phases: Synopsis/ Initiation, Data Collection, DataAnalysis and Interpretation, Conclusion.
- The aspects of the project work to be covered by students can be assessed during theacademic year.
- 20 marks assigned for Project Work can be divided in the following manner:

## PROJECT WORK: 20 Marks

The teacher will assess the progress of the project work in the following manner:

Month	Periodic Work	Assessment Rubrics	Marks
April -July	Instructions about Project Guidelines, Background reading Discussions on Theme and Selection of the Final Topic, Initiation/ Synopsis	Introduction, Statement of Purpose/Need and objectives of the study, Hypothesis/Research Question, Review of Literature, Presentation of Evidence, Methodology, Questionnaire, Data Collection.	5
August - October	Planning and organization: forming an action plan, feasibility, or baseline study, Updating/modifying the action plan, Data Collection	Significance and relevance of the topic; challenges encountered while conducting the research.	6
November - January	Content/data analysis and interpretation. Conclusion, Limitations, Suggestions, Bibliography, Annexures and overall presentation of the project.	Content analysis and its relevance in the current scenario. Conclusion, Limitations, Bibliography, Annexures and Overall Presentation.	5
January/ February	<b>Final Assessment and VIVA by both Internal and External Examiners</b>	External/ Internal Viva based on the project	4
		<b>TOTAL</b>	<b>20</b>

### 4. Viva-Voce

- At the end, each learner will present the research work in the Project File to the External and Internal examiner.
- The questions should be asked from the Research Work/ Project File of the learner.
- The Internal Examiner should ensure that the study submitted by the learner is his/her own original work.
- In case of any doubt, authenticity should be checked and verified. \*\*\*\*\*