

INI-CET May 2024 Pathology & Microbiology Unofficial Answer Key 2024

Q. Which is an intranuclear immunohistochemistry marker for neuroendocrine tumors?

- a. Synaptophysin
- b. Chromogranin
- c. INSM
- d. NCAM1/ CD65



Ans: (C)

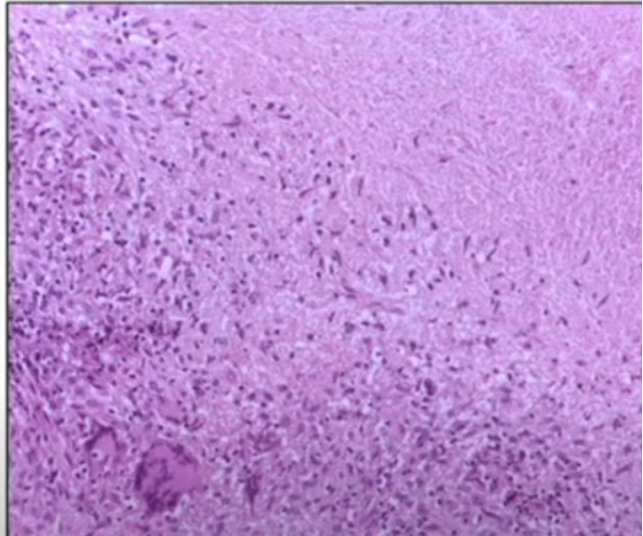
Q. Patient presents with neck swelling with compression of trachea and esophagus. Histopathological assessment shows cell nests and pink extracellular amyloid stroma. What is the cell of origin of this tumor?

- a. Parafollicular C cells
- b. Askanazy cells
- c. Hurthle cells
- d. Follicular cells

Ans: (a)

Q. Histological examination of cervical lymph node shown below. Diagnosis?

- a. TB
- b. Sarcoidosis
- c. Hodgkin's lymphoma
- d. LCH



Ans:

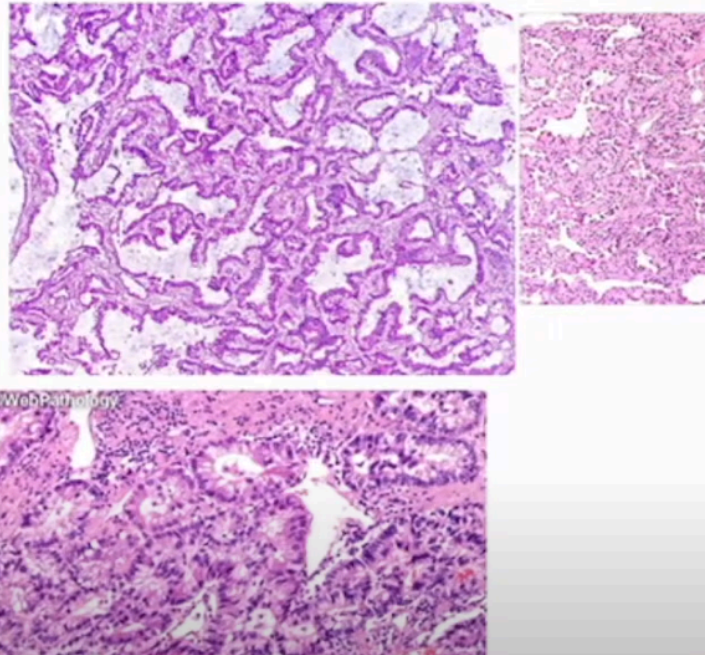
Q. Which one is not a criteria of Kawasaki disease?

- a. Purulent conjunctivitis **C**
- b. Rash **R**
- c. Edema **E**
- d. LAP **A**
- e. Strawberry tongue **M**

Ans: (a)

Q. Lung biopsy

- a. SCC
- b. Small cell carcinoma
- c. Adenocarcinoma
- d. Large cell carcinoma



Ans: (c)

Q. FISH can detect all except

- a. Amplification
- b. Deletion
- c. Translocation
- d. Point mutation

Ans: (d)

Q. Which of the following are not markers of GIST?

- a. PDGFRB
- b. SDH
- c. NRG-1
- d. KIT

Ans: (c)

Q. All of the following are growth promoting proto oncogenes except?

- a. FGF
- b. PDGF
- c. TGF alpha
- d. TGF beta

Ans: (d)

Q. Match the blood product with the shelf life mentioned in the next column

- a. Single donor platelet
- b. Packed red blood cells
- c. Cryoprecipitate/ fresh frozen plasma
- d. Granulocyte concentrate

Ans: (d)

**Q. Which of the following is used in the treatment of Hemophilia B?
(single option or multiple options?)**

- a. Fresh frozen plasma
- b. Cryoprecipitate
- c. Factor 8
- d. Cryo poor plasma

Ans: (a)

**Q. Which of the following is used in the treatment of Hemophilia B?
(single option or multiple options?)**

- a. Fresh frozen plasma
- b. Cryoprecipitate
- c. Factor 8
- d. Cryo poor plasma

Ans: (a) & (d)

**Q. Case of trauma in a patient with an unknown blood group. Patient is unstable and requires urgent blood transfusion . Which type of blood should be transfused?
(multiple options)**

- a. A+
- b. AB+
- c. O+
- d. O-

Ans: (c) & (d)