

2022 XI 24

0230

Seat No.

--	--	--	--	--

Time : 1 Hour

FIRST-TERM

**APPAREL**

Subject Code

**(NSQF)**

S	1	0	7	9
---	---	---	---	---

Total No. of Questions : 20 (Printed Pages : 10)

Maximum Marks : 20

- INSTRUCTIONS :**
- (i) Every question has four choices (A), (B), (C) and (D) and only one of them is the correct answer.
  - (ii) On the OMR sheet, darken completely with a ball point pen Only ONE bubble you consider as the most appropriate answer.
  - (iii) Multiple markings are invalid.
  - (iv) Use Blue or Black ball point pen only.
  - (v) Do not fold the OMR sheet or use white ink.
  - (vi) For each question, you will be awarded ONE mark, if you have darkened only the bubble corresponding to the correct answer. In all other cases, you will get zero mark. There is no negative mark.
  - (vii) Once the bubble is filled, it is not possible to change the answer.
  - (viii) Only one OMR sheet will be provided. Hence sufficient care must be taken while darkening the bubble.

1. Receiver responses to the message is known as ..... 1
  - (A) Encoding
  - (B) Decoding
  - (C) Feedback
  - (D) Returnback
  
2. Stress management helps to build ..... 1
  - (A) Physical strength
  - (B) Mental problems
  - (C) Increase behavioural problem
  - (D) Psychological disorder
  
3. A file which organises accordingly date, size, alphabet, name and type is called ..... 1
  - (A) Deleting file
  - (B) Creating file
  - (C) Menu file
  - (D) Organise file
  
4. Communication relies on eyesight is known as .....
  - (A) Communication
  - (B) Visual communication
  - (C) Oral communication
  - (D) Written communication





5. A management that refers to focusing human efforts for maintaining a healthy body and mind is ..... 1
- (A) Work management
  - (B) Business management
  - (C) Time management
  - (D) Stress management
6. The means by which the message is sent is ..... ? 1
- (A) Communication channels
  - (B) Feedback
  - (C) Decoding
  - (D) Encoding
7. DOS is an example of ..... 1
- (A) Management system
  - (B) Android system
  - (C) Application system
  - (D) Operating system

8. Temporary stitches on fabric is known as ..... 1
- (A) Basting
  - (B) Blanket stitch
  - (C) Machine stitches
  - (D) Embroidery stitches
9. Bound seam is also known as ..... 1
- (A) Piping
  - (B) Blanket seam
  - (C) Hemming
  - (D) Pico
10. The direction of yarns in a woven fabric is called ..... 1
- (A) Bias
  - (B) Selvedge
  - (C) Grain
  - (D) Ease

11. The stitch length is determined by the movement of ..... 1

- (A) Feed dog
- (B) Stitch length regulator
- (C) Stitch line
- (D) Needle plate

12. Identify the plain seam : 1

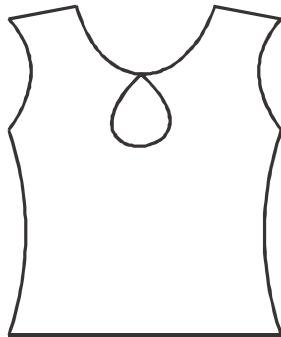
- (A) 
- (B) 
- (C) 
- (D) 

13. Darts, pleats and gathers are used as a ..... in a garment. 1
- (A) Decoration
  - (B) Fullness
  - (C) Component
  - (D) Ornamentation
14. A part of a garment used for regulating fullness in the upper part and lower part of a garment is known as ..... 1
- (A) Yoke
  - (B) Gathers
  - (C) Placket
  - (D) Belt
15. An opening at the upper part or the lower part of a garment for easy wear of a garment is known as ..... 1
- (A) Pocket
  - (B) Yoke
  - (C) Placket
  - (D) Slash
16. A fullness used to shorten the length of a fabric is known as ..... 1
- (A) Darts
  - (B) Pockets
  - (C) Plackets
  - (D) Gathers

17. A garment component used to hold small items and it is stitched or inserted in a garment is known as ..... 1

- (A) Pocket
- (B) Placket
- (C) Sleeves
- (D) Yokes

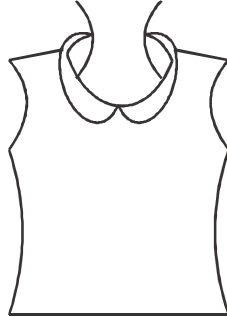
18. Identify the neckline : 1



- (A) Square neckline
- (B) Keyhole neckline
- (C) V-shape neckline
- (D) U-shape neckline

19. Identify the collar :

1



- (A) Shawl Collar
- (B) Peterpan Collar
- (C) Shirt Collar
- (D) Mandarin Collar

20. Identify the sleeve :

1



- (A) Kimono sleeve
- (B) Raglan sleeve
- (C) Puff sleeve
- (D) Tulip sleeve





