

①  
1 of 40

**Quantitative Aptitude and Reasoning**

On a scale drawing, a rectangle 1 inch by  $1\frac{1}{3}$  inches represents the floor of a room and the indicated scale is 1 inch equals 15 feet. How many square tiles of 6 inches on a side will be needed to cover this floor?

- 40
- 1,200
- 70
- 120

The correct option is "1,200" Score:- 1

2 of 40

**Quantitative Aptitude and Reasoning**

If 15 people contributed a total of Rs. 20.00/- toward a gift and each of them contributed atleast Rs. 1.00/-, then find the maximum possible amount any one person could have contributed.

- Rs. 5.00/-
- Rs. 1.00/-
- Rs. 1.25/-
- Rs. 6.00/-

The correct option is "Rs. 6.00" Score:- 1

3 of 40

**Quantitative Aptitude and Reasoning**

Cottages at a resort are rented for half the summer price in each of the 3 spring months and one-third the summer price in each of the 6 fall and winter months. If each cottage brings in a total of Rs. 3,861/- when rented for each of the 12 months of the year, what is the monthly rent for each of the 3 summer months?

- Rs. 594/-
- Rs. 702/-
- Rs. 858/-
- Rs. 297/-

The correct option is "Rs. 594" Score:- 1

4 of 40

2

### Quantitative Aptitude and Reasoning

If each of 4 subsidiaries of Company R has been granted a line of credit of Rs.7,00,000/- and each of the other 3 subsidiaries of Company R has been granted a line of credit of Rs.1,12,000/-, what is the average (arithmetic mean) line of credit granted to a subsidiary of Company R?

- Rs. 15,68,000/-
- Rs. 3,13,600/-
- Rs. 4,06,000/-
- Rs. 4,48,000/-

The correct option is "Rs. 448,000" Score:- 1

5 of 40

### Quantitative Aptitude and Reasoning

A can print 50 papers in 10 hours. A and B together can print 70 papers in 10 hours. How many hours will B take to print 26 papers?

- 17 hours
- 26 hours
- 13 hours
- 18 hours

The correct option is "13 hours" Score:- 1

6 of 40

### Quantitative Aptitude and Reasoning

Five friends Amit, Bunti, Chintu, Vipin and Vishal have agreed to work together on a project. The project requires them to work five days a week and this group has the following schedule when they can work:-

1. Chintu and Vipin can work on Monday, Tuesday and Wednesday
  2. Vipin and Vishal can work on Monday, Wednesday and Thursday
  3. Vishal and Amit can work on Monday, Friday and Thursday
  4. Amit and Bunti can work on Friday, Tuesday and Thursday
  5. Chintu and Bunti can work on Friday, Tuesday and Wednesday
- Which one of the five friends cannot work on Thursdays?

- Chintu
- Vipin
- Bunti
- Vishal

The correct option is "Chintu" Score:- 1

7 of 40

3

### Quantitative Aptitude and Reasoning

Refer the data given below to answer the following questions.

In a class of 120 students, each student studies atleast one of the subjects from History, English and Maths. 59 study History, 67 study English and 73 Maths. 34 study Maths and History, 26 English & Maths and 33 History and English.

How many students study exactly two subjects?

- 48
- 51
- 54
- 46

The correct option is "51" Score:- 1

8 of 40

### Quantitative Aptitude and Reasoning

Refer to the data below and answer the questions that follow.

4 girls - A, B, D and C study in sections P, Q, R and S of a college. Each of them belongs to a separate house - Red, Yellow, Blue and White. Three of them are sisters.

- a] B is from Red house.
- b] D, the captain of Yellow house is from section S.
- c] The girl from section R belongs to White house.
- d] The girl from section P is an only child.
- e] C does not belong to Blue house.
- f] The girl from Yellow house is A's sister.

Who belongs to Blue house?

- C
- D
- B
- A

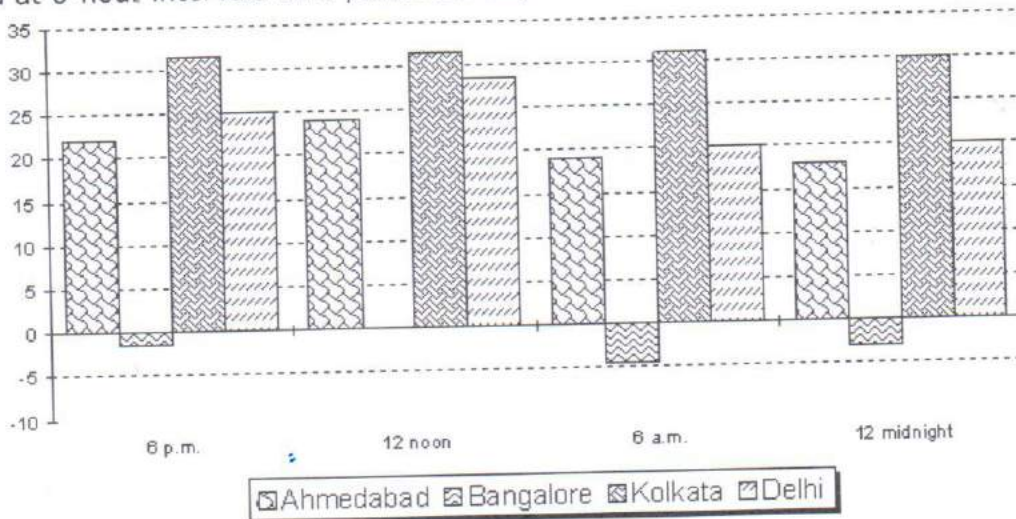
The correct option is "A" Score:- 1



### Quantitative Aptitude and Reasoning

Refer to the bar chart below.

The following chart shows the pollution level of four cities Ahmedabad, Bangalore, Kolkata and Delhi, measured at 6-hour intervals on a particular day.



What is the average pollution level of the four cities at 12 noon?

- 21.25
- 20.5
- 23.85
- 22.75

The correct option is "21.25" Score:- 1

10 of 40

### Quantitative Aptitude and Reasoning

All alphabets taken in pairs are swapped with their adjacent alphabet. So the alphabet series is now written as BADCFEZY. What word can be formed with the alphabet in the 10<sup>th</sup>, 12<sup>th</sup>, 13<sup>th</sup> and 16<sup>th</sup> place of the new series?

- LION
- ICON
- PEON
- JOIN

The correct option is "ICON" Score:- 1

11 of 40

5

English

Arrange the sentences A, B, C, D in a logical sequence so as to make a paragraph.

- A. One of the ways in which geologists identify and classify minerals - including gemstones - is by testing their hardness.
- B. Minerals at each grade will scratch all those of lower grades and will be scratched by all higher grades.
- C. The scale they use was devised by a 19-century German mineralogist Fredrich Mohs.
- D. Known as the Mohs scale of hardness, it has ten grades, each represented by a standard mineral.

- DCAB
- ACDB
- ADCB
- DBAC

The correct option is "ACDB" Score:- 1

12 of 40

English

Each question below contains six statements followed by four sets of combinations of three. Choose the set in which the statements are logically related.

- a] All Ps are Qs.
- b] All Rs are Ps.
- c] All Bs are Qs.
- d] All Rs are Bs.
- e] All Qs are Rs.
- f] All Ps are Bs.

- ced
- aeb
- cf
- fae

The correct option is "acf" Score:- 1

13 of 40  
English

6

04:30:00  
11/11/2017

Choose the word or phrase which you think is nearest in meaning to the key word.

**Voracious**

- Insatiable
- Truthful
- Vicious
- Ruthless

The correct option is "Insatiable" Score:- 1

14 of 40  
English

In the following sentence, some part of the sentence is underlined. Beneath the sentence, you will find four ways of phrasing the underlined part. Select the best answer keeping in mind correctness, effectiveness of expression, grammar, choice of words and sentence construction.

My house is better than Sham.

- Than Sham
- Off than Sham's
- Than Sham's
- han that of Sham

The correct option is "Off than Sham's" Score:- 1

15 of 40  
English

Below is a sentence with a blank. From the choices given, select the appropriate word to fill in the blank.

If you paint the walls cream, I think it will \_\_\_\_\_ the colour of the curtains better.

- Bring out
- Throw out
- Lift out
- Take out

The correct option is "Take out" Score:- 1

16 of 40  
English

7

Arrange the sentences A, B, C, D to form a logical sequence.

- A. In its compelling need for survival, the 110 year old institution is scrambling for pre-poll allies
- B. P.V. Narsimha Rao's party sees the writing on the wall only too clearly
- C. Its traditional vote banks are threatened not only by opposition groups, but also by the rival Congress
- D. The era of go-it-alone Congress rule at the center is facing extinction

- CDAB
- BDCA
- DBCA
- DACB

The correct option is "BDCA" Score:- 1

17 of 40  
English

Arrange the sentences A, B, C, D to form a logical sequence.

- A. Now, 3 weeks after the murder, the police are discovering gaping holes in the investigation
- B. The murder of Naina Sahni, it seemed, would be solved the moment the police caught Sushil Sharma
- C. They said it was an open-and-shut case
- D. When they did, they boasted "We have enough evidence to hang him."

- BACD
- CBDA
- BCDA
- ABDC

The correct option is "CBDA" Score:- 1



18 of 40  
English



09-10-05  
English

Arrange the sentences A, B, C, D in a logical sequence between the sentences (1) and (6) so as to make logical sense.

- 1] Food is the fuel that makes the human machine work.
- A. In making this calculation, the total potential energy is measured in a heat unit called a food calorie.
- B. Man obtains this energy from the foods he eats: he burns food, much as an automobile burns gasoline or a steam engine burns coal.
- C. The energy that foods can provide determines the quantity of food that is required by the body.
- D. Like an engine, when the human body is functioning, it is expending energy; energy is required to breathe, to walk, to stand, to move a finger, even to think.
- 6] The calorie rating given to food - 75 calories for a slice of white bread, for example - simply indicates the amount of heat energy theoretically contained in that food.
- ADBC
- CBDA
- BCAD
- DBCA

The correct option is "DBCA" Score:- 1

19 of 40  
English

Below is a sentence with a blank. From the choices given, select the appropriate word to fill in the blank.

He lost his temper and \_\_\_\_\_ his teeth in rage.

- Ground
- Rased
- Rattled
- Curled

The correct option is "Curled" Score:- 1



20 of 40  
English

9

In the following sentence, four words or phrases have been underlined. Choose one word or phrase which would not be appropriate in standard English.

I have no problems in admitting that he is a better writer than me.

- 1 → in
- 2 → admitting
- 3 → that
- 4 → me

The correct option is "4 → me" Score:- 1

21 of 40  
General Awareness

"They are people of yellow complexion, oblique eyes, high cheek bones, sparse hair and medium height". The reference here is to:-

- Austrics
- Nordic Aryans
- Negroids
- Mongoloids

The correct option is "Mongoloids " Score:- 1

22 of 40  
General Awareness

Devaluation of currency helps to promote:-

- Exports
- Imports at lower costs
- National Income
- Savings

The correct option is "Exports" Score:- 1

23 of 40

10

**General Awareness**

'Reflects your inner fire', is the punchline of which company?

- Tanishq
- Oyster Bay
- Gili
- Asmi

The correct option is "Asmi" Score:- 1

24 of 40

**General Awareness**

Who is the President of Nasscom?

- Som Mittal
- Arun Nanda
- Kiran Karnik
- Nandana Nilekani

The correct option is "Kiran Karnik" Score:- 1

25 of 40

**General Awareness**

Which women sportstar endorses Canon?

- Martina Hingis
- Maria Sharapova
- Martina Navratilova
- Sania Mirza

The correct option is "Maria Sharapova" Score:- 1

26 of 40

**General Awareness**

Who has been appointed as the UNICEF's goodwill ambassador?

- Jack Trout
- Angelina Jolie
- Nelson Mandela
- Roger Federer

The correct option is "Angelina Jolie" Score:- 1

27 of 40

11

**General Awareness**

Who is the chief editor of India Today?

- Aroon Purie
- Dilip Padgaonkar
- T. S. Ninan
- Tony Joseph

The correct option is "Aroon Purie" Score:- 1

28 of 40

**General Awareness**

Who proposed the opening of the insurance sector?

- R.L.Bhatia
- M.Narasimhan
- Y.C.Deveshwar
- R.N.Malhotra

The correct option is "R.N.Malhotra" Score:- 1

29 of 40

**General Awareness**

The Suez Canal connects:-

- Mediterranean & Red Sea
- Baltic & Caspian Sea
- Red & Caspian Sea
- Mediterranean & North Sea

The correct option is "Mediterranean & Red Sea" Score:- 1

30 of 40

**General Awareness**

In which language was the Shrimad Bhagavad Gita originally written?

- Pali
- Ardha-magadhi
- Prakrit
- Sanskrit

The correct option is "Sanskrit" Score:- 1

31 of 40

12

**Business Aptitude**

The following table shows the percentage of enrolled students from 5 colleges who appeared in 3 tests, the number of those who passed in each of them.

College	No. of enrolled students	Percentage of enrolled who appeared for the test	Number of student who passed in Test X	Number of student who passed in Test Y	Number of student who passed in Test Z
A	800	80%	600	610	480
B	450	90%	360	300	350
C	600	60%	250	300	320
D	900	70%	540	600	580
E	750	80%	450	500	500

Which college has the best pass percentage in test X, if pass percentage is number of students who passed as percentage of number of students who took the test?

- A
- B
- C
- D

The correct option is "A" Score:- 1

32 of 40

**Business Aptitude**

Atul weighs 5 kgs more than Bunty, Bunty weighs 6 kgs less than Chintu and Chintu weighs 2 kgs more than Dhriti. Which of the following statement is true?

- Dhriti weighs 4 kgs less than Chintu
- Atul weighs 1 kg more than Dhriti
- Atul weighs 2 kgs more than Dhriti
- Atul weighs 1 kg less than Dhriti

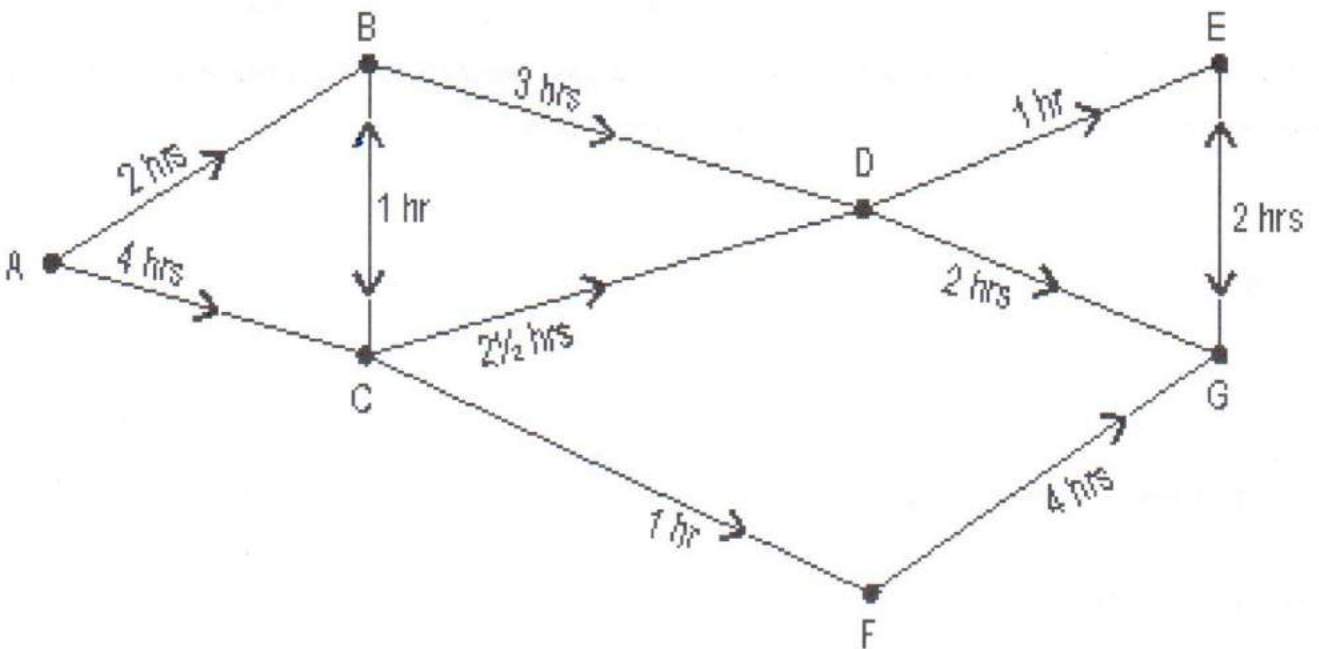
The correct option is "Atul weighs 1 kg more than Dhriti" Score:- 1



## Business Aptitude

Refer to the data below.

The map below shows the road between cities. A uni-direction arrow would indicate that one can travel in that direction only. The numbers indicate the time it would take to traverse the path.



The shortest path (in terms of time) from A to F would take:-

- 5 hours
- 6 hours
- 7 hours
- 4 hours

34 of 40

14

**Business Aptitude**

Out of 100 people who have seen atleast one of the two movies, 40 have not seen Paheli and people who have seen only Paheli exceeds the number of people who have seen only Musafir by 10. How many have seen both the movies?

- 20
- 0
- 5
- 10

The correct option is "10" Score:- 1

35 of 40

**Business Aptitude**

The following table shows the purchase and sales of shoes by BABA Ltd. in 6 months of 2005. BABA has an opening stock of 1800 shoes on July 1<sup>st</sup>. Also note that  $\text{Opening Stock} + \text{Purchase} - \text{Sales} = \text{Closing Stock}$ .

Month	Purchase	Sales
July	2500	1925
August	1775	1720
September	1825	1750
October	1925	1875
November	2150	2200
December	1650	1700

Closing stock was highest in the month of:-

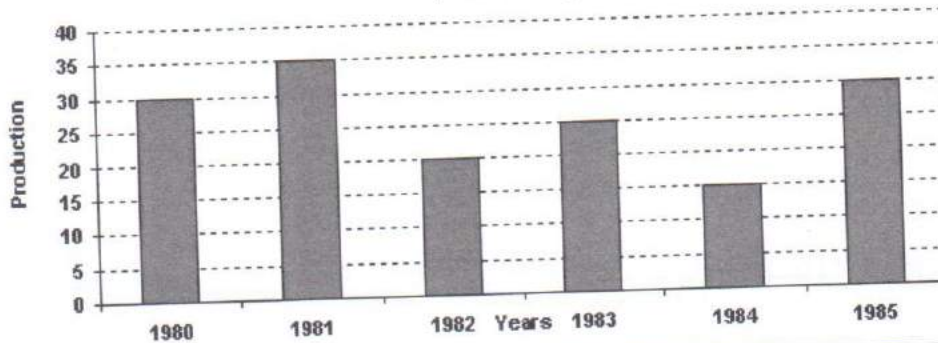
- July
- November
- June
- October

The correct option is "October" Score:- 1

36 of 40 15  
**Business Aptitude**

Refer the graph below to answer the following question.

**PRODUCTION OF FOOD GRAINS OVER THE YEAR**  
 ('000 tonnes)



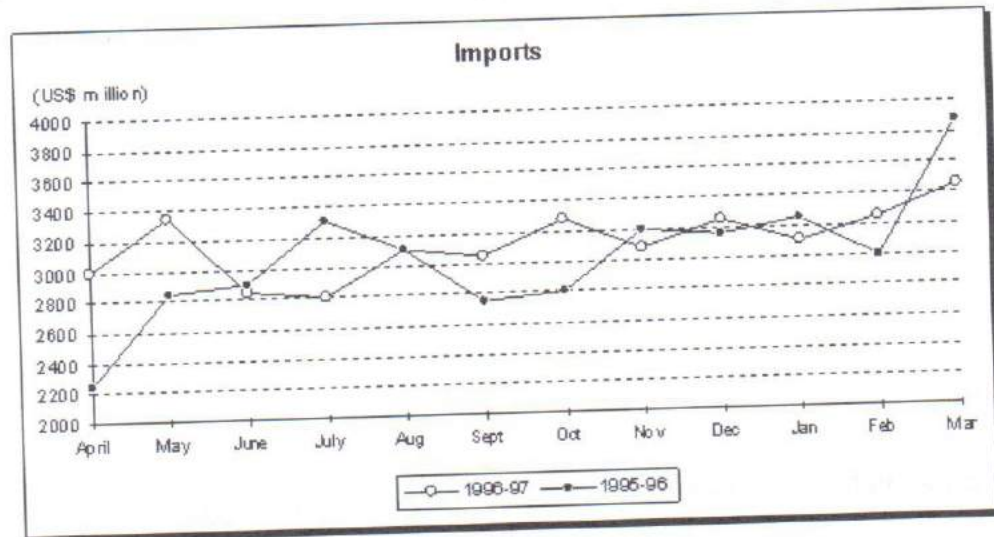
In how many of the given years was the production below the average production of the given years?

- Two
- One
- Three
- Four

The correct option is "Three" Score:- 1

37 of 40  
**Business Aptitude**

Refer to the graph below to answer the following question.



16

In how many months in 1996-97 were the imports less than the corresponding months in 1995-96?

- 7
- 5
- 6
- 4

The correct option is "4"Score:- 1

38 of 40

**Business Aptitude**

The following table gives the sales of 5 companies and their expenses as a percentage of sales.

Company	Sales (in Rs. Crores)	Expenses as percentage of Sales
A	800	70%
B	800	60%
C	600	75%
D	900	80%
E	1200	70%

Note: Profit = Sales - Expenses

$$\text{Profit percentage} = \frac{\text{Profit}}{\text{Sales} - \text{Profit}} \times 100$$

Which company has the least profit percentage?

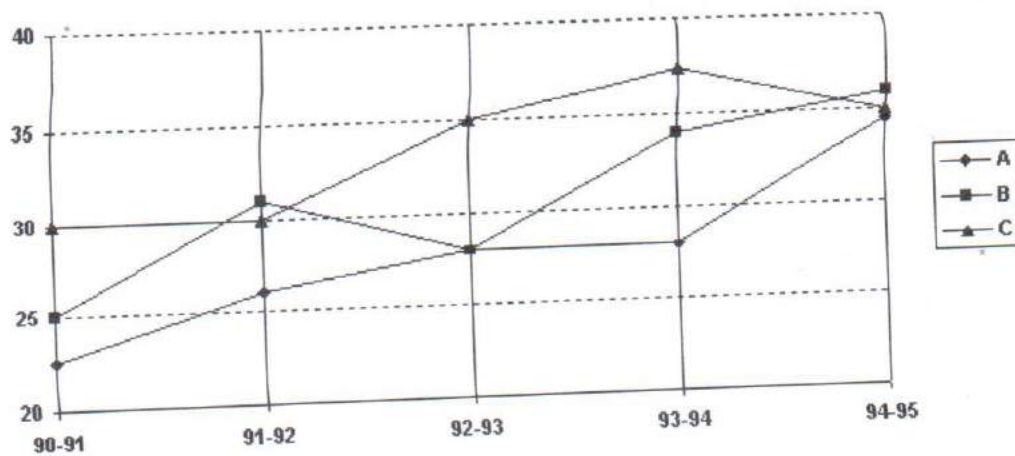
- A
- B
- C
- D

The correct option is "D"Score:- 1

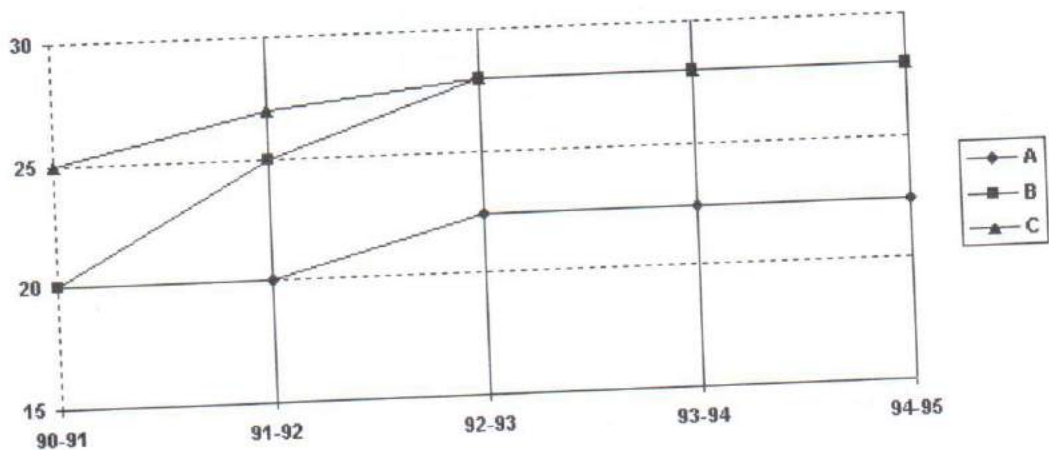


Refer the graph below. The graphs indicate the sales and the cost figures of the three products A, B and C manufactured by a company for five years.

SALES



COST



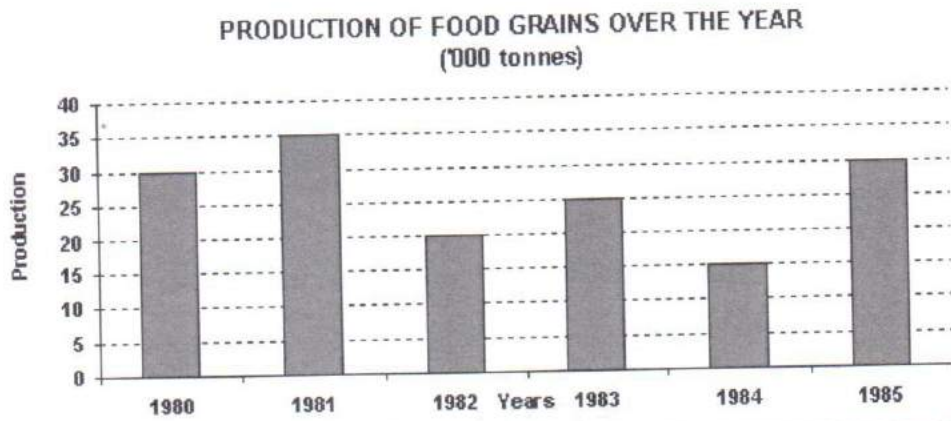
What has been the change in contribution of product B to the total profit between 1990-91 and 1994-95?

- 38% points increase
- 14% points increase
- 38% points decrease
- 17% points decrease

The correct option is "17% points decrease" Score: - 1

18

Refer the graph below to answer the following question.



What was the difference in the production of food grains between 1980 and 1983?

- 500 tonnes
- 10,000 tonnes
- 15,000 tonnes
- 5,000 tonnes

The correct option is "5,000 tonnes" Score:- 1