

WESTERN MUSIC PAPER 1
(THEORY)

Maximum Marks: 70

Time Allowed: Three hours

*(Candidates are allowed **additional 15 minutes** for **only** reading the paper.
They must **NOT** start writing during this time).*

*Answer all questions in **Section A**, **Section B** and **Section C**.*

***Section A** consists of **objective / very short** type questions.*

***Section B** consists of **short** answer questions.*

***Section C** consists of **long** answer questions.*

The intended marks for questions or parts of questions are given in brackets [].

SECTION A – 14 MARKS

Question 1

- (i) 1st Inversion of F major chord is: [1]
- (a) C F A
 - (b) F A C
 - (c) A C F
 - (d) F B \flat C
- (ii) The A7 chord is: [1]
- (a) A C \sharp E G
 - (b) A C \sharp F B
 - (c) A C \sharp D \sharp G
 - (d) A C \sharp G A

- (iii) The minor chords are referred to as: [1]
- (a) uppercase roman numerals.
 - (b) lowercase roman numerals.
 - (c) alphabets.
 - (d) none of the above.
- (iv) Which one of the following composers belongs to Baroque era? [1]
- (a) Beethoven
 - (b) Bach
 - (c) Schubert
 - (d) Caesar Frank
- (v) Which one of the following is a type of modulation? [1]
- (a) Circle of fifth
 - (b) Sub-Dominant
 - (c) Diminished
 - (d) Chord Progression
- (vi) State whether the following statements are True or False:
- (a) The G minor scale has 1 flat in its scale. [1]
 - (b) Figured bass is associated with inversions. [1]
 - (c) First inversion starts on the root note. [1]
- (vii) S A T B is referred to as _____ of music. [1]
- (viii) Beethoven's Symphony number 2 was written in the year _____. [1]
- (ix) A piece of solo instrumental music is called _____. [1]
- (x) Which instrument uses figured bass in general? [1]
- (xi) Who wrote Violin Sonata? [1]
- (xii) What is the other name for Unessential notes? [1]

SECTION B – 28 MARKS

Question 2 [4]

(i) Write a brief note on Harmonic modulations.

OR

(ii) Write a brief note on Prelude and its nature.

Question 3 [4]

Unessential notes add progressive aspects to a melody. Justify.

Question 4 [4]

Briefly explain Dominant 7th chord and the forms of Inversions.

Question 5 [4]

(i) What are the advantages of using Figured bass?

OR

(ii) What are *inversions*? Mention its three positions.

Question 6 [4]

Explain parts of music. How are they used in Harmonic Progression?

Question 7 [4]

Mention *any two* types of Rhythm positions. Briefly explain how these positions can be structured in bars.

Question 8 [4]

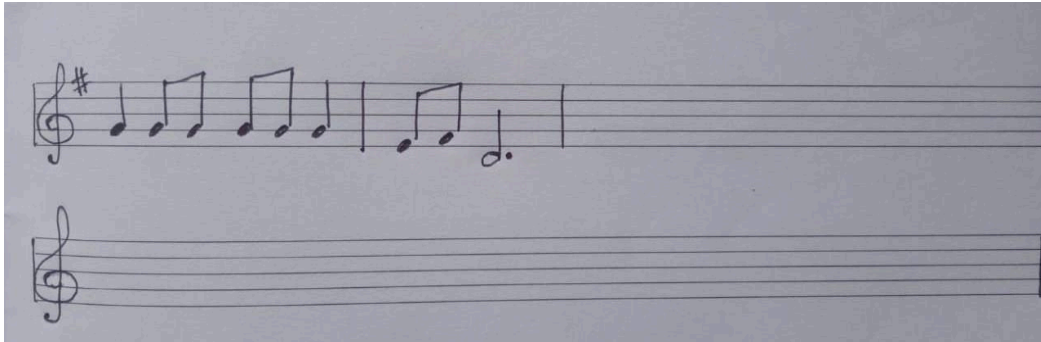
Write the chord progression for C major scale and its relative minor.

SECTION C – 28 MARKS

Question 9

[7]

The image given below shows the rhythm structure. Complete the melody for the lyrics.

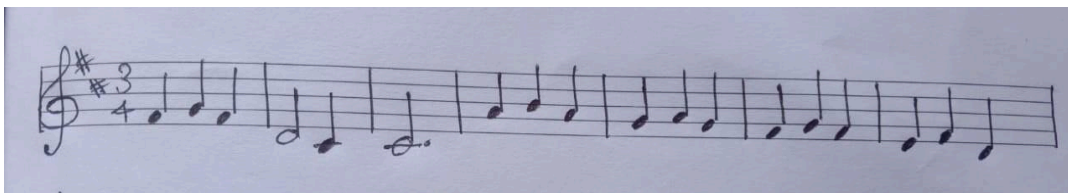


Hush little baby, don't say a word,
Mama's going to buy you a mockingbird.
And if that mockingbird doesn't sing,
Mama's going to buy you a diamond ring.
And if the diamond ring turns bass,
Mama's going to buy you a looking glass.

Question 10

[7]

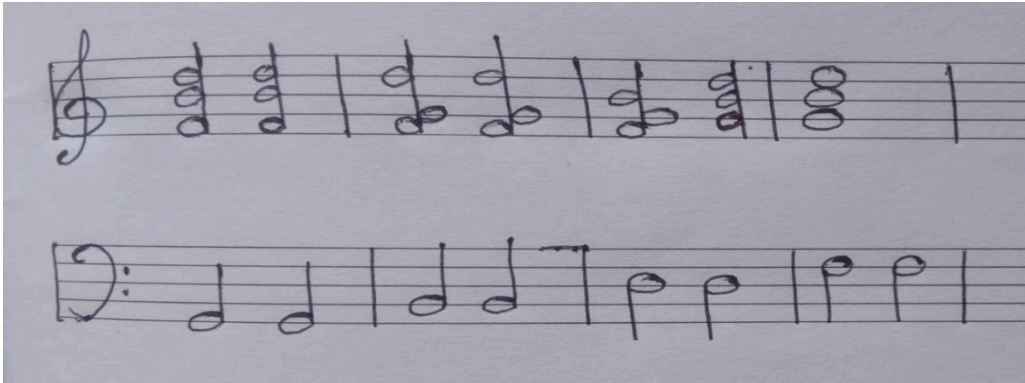
Write four parts harmony in a simple pianoforte style for the given melody.



Question 11

[7]

Mark the appropriate figured bass numbers for the melody given below.



Question 12

[7]

(i) Analyse the compositions given below.

- (a) Beethoven's Symphony no.2 in major op36
- (b) Schubert's *Erl Kenig* (Earl King)

OR

(ii) Analyse Caesar Frank's last movement in Piano and Violin Sonata.