



11th International Olympiad of Science 2019



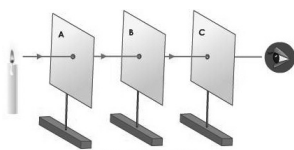
Presented by:
SILVERZONE FOUNDATION
NEW DELHI - INDIA

Organized by:
Silverzone Foundation
New Delhi, India
FOR SUPREMACY IN SCIENCE
www.silverzone.org

CLASS 6th SAMPLE QUESTIONS

The Actual Question Paper Contains 50 Questions. The Duration of the Test Paper is 60 Minutes.

1. Look at the following figure carefully:



Which one of the following properties of light has been shown with the help of above figure?

- (A) Light bends when it enters from one medium to other
(B) Light comes back into same medium after reflection
(C) Light travels in a straight line
(D) All of these

2. Name the plant whose leaves are modified to thin spines to reduce the loss of water through transpiration.

- (A) Water lily (B) Sugar plant
(C) Cactus plant (D) Mango plant

3. Who of the following is correct?

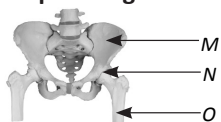
Raj: Copper has shiny appearance.

Raman: Iron has shiny appearance.

Rajesh: Wood has shiny appearance.

- (A) Raj and Raman (B) Raman and Rajesh
(C) Raj and Rajesh (D) All of them

4. Which one of the following statements is correct for the picture given below?



- I. The picture includes hip bones and it has two sockets on the two sides of its lower part.
II. M is known as Scapula.
III. M supports and protects the lower organs of the body such as intestines, urinary bladder and internal sex organs.
IV. It is a shoulder bone in which O is attached to M through the ball and socket joint.

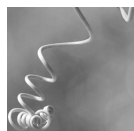
V. O is attached to M by the ball and socket joint.

- (A) I, II and III (B) I, III and V
(C) II, III and IV (D) III, IV and V

5. Rotation of Earth on its axis is an example of which type of motion?

- (A) Rectilinear motion (B) Circular motion
(C) Rotational motion (D) Oscillatory motion

6. This is the special organ of a climber plant which helps the plant in climbing. Name the organ.



- (A) Tendril (B) Lamina (C) Petiole (D) Leaf blade

7. One of the Abiotic components present in the environment is air. The major components of the air are Nitrogen, Oxygen, Argon, and Carbon dioxide. Select the option that shows the correct order of percentage of each component in the air in decreasing order, that is, the component with highest percentage is placed first and that with lowest is placed last.

- (A) Nitrogen → Oxygen → Argon → Carbon dioxide
(B) Oxygen → Nitrogen → Argon → Carbon dioxide
(C) Nitrogen → Argon → Oxygen → Carbon dioxide
(D) Carbon dioxide → Oxygen → Nitrogen → Argon

8. At what trophic level in the food chain the autotrophs are present.

- (A) First trophic level (B) Second trophic level
(C) Third trophic level (D) Fourth trophic level

9. Distance from place X to Y is 45 metre and time taken by a person to cover this distance is 9 seconds. The speed of that person in km/h is:

- (A) 18 km/h (B) 5 km/h
(C) 9 km/h (D) 20 km/h

10. Name the joint which exist between our skull and neck.

- (A) Hinge joint (B) Ball and socket joint
(C) Pivot joint (D) Fixed joint

ANSWERS

1. (C) 2. (C) 3. (A) 4. (B) 5. (C) 6. (A) 7. (A) 8. (A) 9. (A) 10. (C)